

12/21/2020 11:26 AM

# TUBELITE, INC.

## E/T/U SERIES 24650 STOREFRONT SYSTEM (NON-HVHZ)(NON-IMPACT)

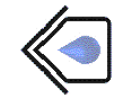
**TUBELITE**  
DEPENDABLE  
LEADERS IN ECO-EFFICIENT STOREFRONT,  
CURTAINWALL AND ENTRANCE SYSTEMS

3056 WALKER RIDGE DRIVE N.W.  
WALKER, MICHIGAN 49544  
PH: 800 866 2227 FX: 616 301 0008

TITLE: E/T/U SERIES 24650  
STOREFRONT SYSTEM  
(NON-HVHZ)(NON-IMPACT)

GENERAL NOTES & TABLE OF CONTENTS

PREPARED BY:  
BUILDING DROPS, INC.  
398 E. DANIA BEACH BLVD., STE. 338  
DANIA BEACH, FL 33004  
PH: (954)959-8478  
FAX: (954)744-4738  
WEB: www.buildingdrops.com



**GENERAL NOTES:**

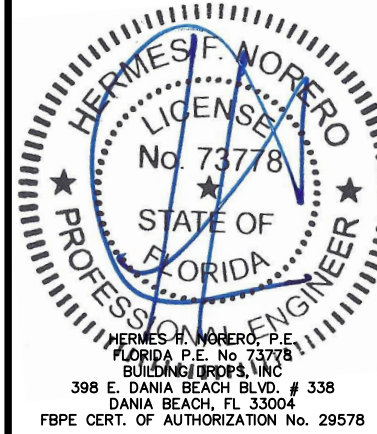
- THE PRODUCT SHOWN HEREIN IS DESIGNED AND MANUFACTURED TO COMPLY WITH THE CURRENT FLORIDA BUILDING CODE (FBC), **EXCLUDING** HVHZ AND HAS BEEN EVALUATED ACCORDING TO THE FOLLOWING:
  - ASTM E 283-04(12)
  - ASTM E 331-00(09)
  - ASTM E 330-02
  - AAMA 501-15
- ADEQUACY OF THE EXISTING STRUCTURAL CONCRETE/MASONRY, 2X FRAMING AND METAL STUD FRAMING AS A MAIN WIND FORCE RESISTING SYSTEM CAPABLE OF WITHSTANDING AND TRANSFERRING APPLIED PRODUCT LOADS TO THE FOUNDATION IS THE RESPONSIBILITY OF THE ENGINEER OR ARCHITECT OF RECORD FOR THE PROJECT OF INSTALLATION.
- 1X AND 2X BUCKS (WHEN USED) SHALL BE DESIGNED AND ANCHORED TO PROPERLY TRANSFER ALL LOADS TO THE STRUCTURE. BUCK DESIGN AND INSTALLATION IS THE RESPONSIBILITY OF THE ENGINEER OR ARCHITECT OF RECORD FOR THE PROJECT OF INSTALLATION.
- THE INSTALLATION DETAILS DESCRIBED HEREIN ARE GENERIC AND MAY NOT REFLECT ACTUAL CONDITIONS FOR A SPECIFIC SITE. IF SITE CONDITIONS CAUSE INSTALLATION TO DEVIATE FROM THE REQUIREMENTS DETAILED HEREIN, A LICENSED ENGINEER OR ARCHITECT SHALL PREPARE SITE SPECIFIC DOCUMENTS FOR USE WITH THIS DOCUMENT.
- APPROVED IMPACT PROTECTIVE SYSTEM **IS REQUIRED** ON THIS PRODUCT IN AREAS REQUIRING IMPACT RESISTANCE.
- FRAME MATERIAL: ALUMINUM 6063-T5 MINIMUM
- ALL STRUCTURAL MATERIALS & DISSIMILAR METALS SHALL BE PROTECTED, TREATED, PAINTED, COATED, AND/OR ISOLATED AS REQUIRED IN THE APPLICABLE SECTIONS OF THE CURRENT FLORIDA BUILDING CODE AND REFERENCED DESIGN SPECIFICATIONS.
- GLASS SHALL MEET THE REQUIREMENTS OF ASTM E 1300 GLASS CHARTS. SEE SHEET 3 FOR GLAZING DETAILS.
- GLASS SHALL BE SET WITH THE USE OF SETTING BLOCKS IN ACCORDANCE WITH CHAPTER 24 OF THE CURRENT FLORIDA BUILDING CODE.
- GLAZING GASKETS SHALL MEET THE MINIMUM PERFORMANCE REQUIREMENTS AS APPLICABLE IN CHAPTER 24 OF THE FLORIDA BUILDING CODE.

TABLE OF CONTENTS	
SHEET	SHEET DESCRIPTION
1	GENERAL NOTES & TABLE OF CONTENTS
2	ELEVATIONS AND ANCHORS LAYOUT
3	GLAZING DETAILS AND DESIGN PRESSURE TABLE
4	HORIZONTAL DETAILS
5	HORIZONTAL DETAILS (CONT.)
6	VERTICAL DETAILS AND DESIGN PRESSURES
7	VERTICAL DETAILS AND DESIGN PRESSURES (CONT.)
8	CORNER DETAILS
9	DOOR DETAILS
10	DOOR DESIGN PRESSURE TABLES
11	DOOR DESIGN PRESSURE TABLES (CONT.)
12	DOOR DESIGN PRESSURE TABLES (CONT.)
13	ANCHOR DETAILS, SCHEDULE & INSTALLATION NOTES

MISSILE IMPACT RATING	DESIGN PRESSURE
NOT IMPACT RATED	SEE SHEETS 3, 6, 7, 10-12, FOR DESIGN PRESSURE LIMITATIONS. THE LOWEST APPLICABLE VALUE SHALL BE APPLIED TO THE ENTIRE SYSTEM.

REMARKS	BY	DATE

THE INSTALLATION DETAILS DESCRIBED HEREIN ARE GENERIC AND MAY NOT REFLECT ACTUAL CONDITIONS FOR A SPECIFIC SITE. IF SITE CONDITIONS CAUSE INSTALLATION TO DEVIATE FROM THE REQUIREMENTS DETAILED HEREIN, A LICENSED ENGINEER OR ARCHITECT SHALL PREPARE SITE SPECIFIC DOCUMENTS FOR USE WITH THIS DOCUMENT



FL #:  
**FL20393**

DATE: **10.28.20**

DWG. BY: **ER**      CHK. BY: **HFN**

SCALE: **NTS**

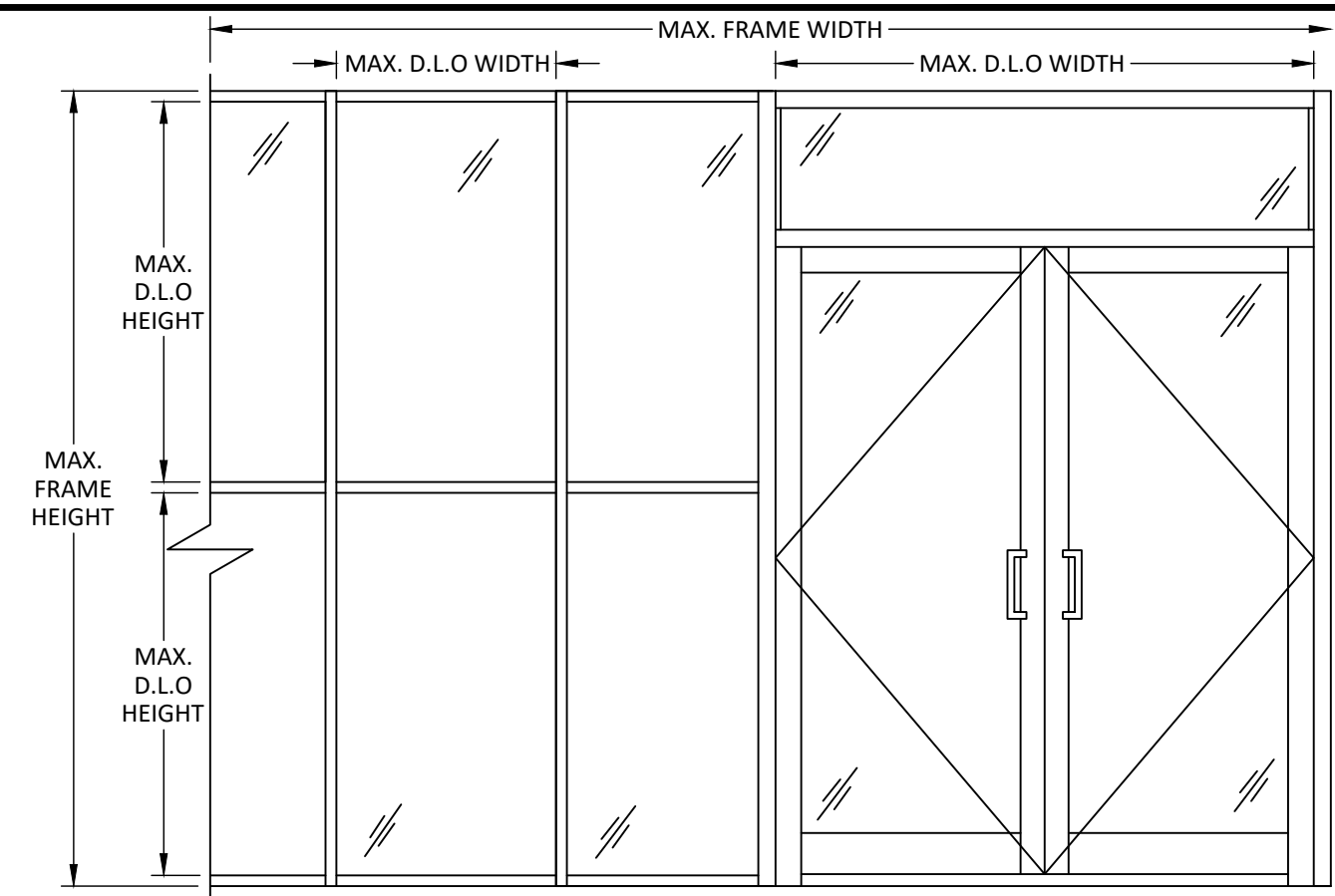
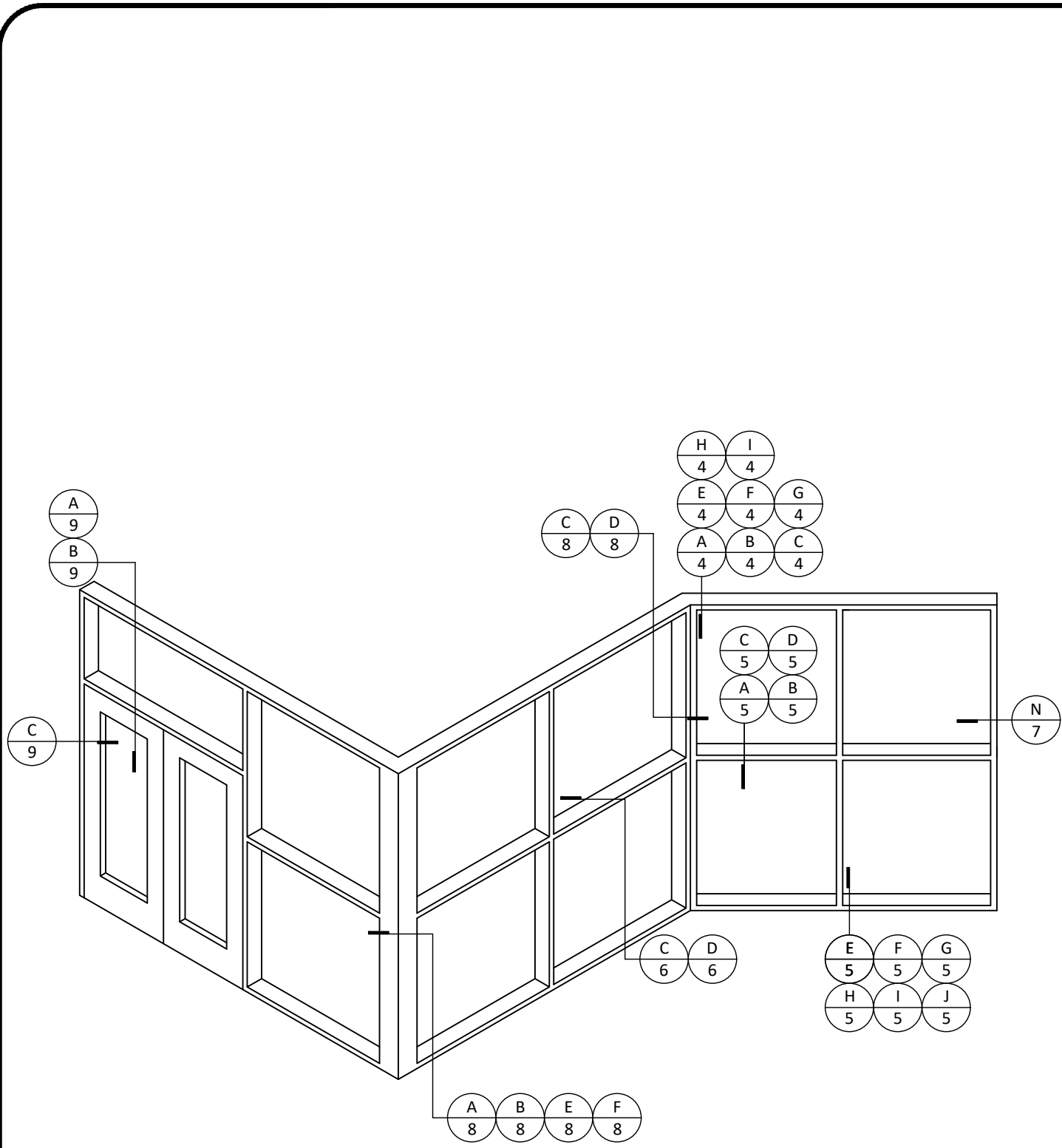
DWG. #: **TLI009**

SECTION  
**1**  
OF 13

c:\users\p50\onedrive - building drops, inc.\tl009 2020-12-21.dwg

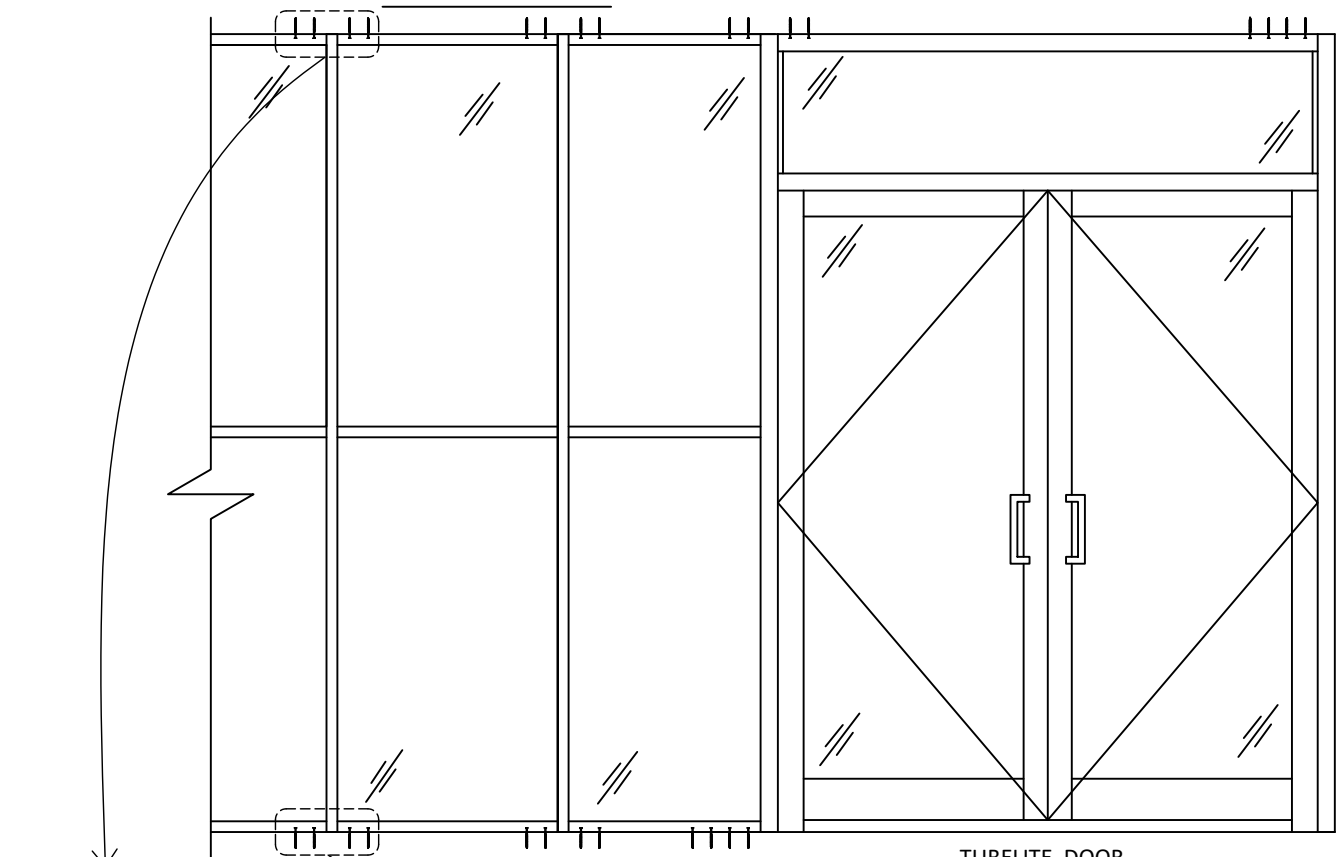
12/21/2020 11:26 AM

c:\users\p50\onedrive - building drops, inc.\t\1009 2020-12-21.dwg



**ELEVATION**

TUBELITE DOOR  
SEE SEPARATE PRODUCT APPROVAL



**ANCHOR LAYOUT**

TUBELITE DOOR  
SEE SEPARATE PRODUCT APPROVAL

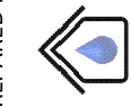
SEE SHEET 10-12 FOR REQUIRED ANCHOR QUANTITIES, AND SHEET 13 FOR ANCHOR DETAILS AND TYPES

**TUBELITE**  
DEPENDABLE  
LEADERS IN ECO-EFFICIENT STOREFRONT,  
CURTAINWALL AND ENTRANCE SYSTEMS

3056 WALKER RIDGE DRIVE N.W.  
WALKER, MICHIGAN 49544  
PH: 800 866 2227 FX: 616 301 0008

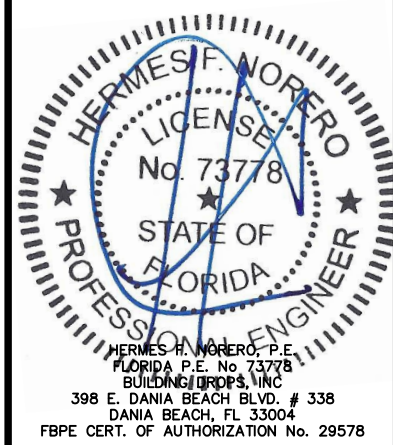
TITLE: E/T/U/ SERIES 24650  
STOREFRONT SYSTEM  
(NON-HVHZ)(NON-IMPACT)  
ELEVATIONS AND ANCHOR LAYOUT

PREPARED BY:  
**BUILDING DROPS, INC.**  
398 E. DANIA BEACH BLVD., STE. 338  
DANIA BEACH, FL 33004  
PH: (954) 999-8478  
FAX: (954) 744-4738  
WEB: www.buildingdrops.com



REMARKS	BY	DATE

THE INSTALLATION DETAILS DESCRIBED HEREIN ARE GENERIC AND MAY NOT REFLECT ACTUAL CONDITIONS FOR A SPECIFIC SITE. IF SITE CONDITIONS CAUSE INSTALLATION TO DEVIATE FROM THE REQUIREMENTS DETAILED HEREIN, A LICENSED ENGINEER OR ARCHITECT SHALL PREPARE SITE SPECIFIC DOCUMENTS FOR USE WITH THIS DOCUMENT



FL #: **FL20393**

DATE: **10.28.20**

DWG. BY: **ER**      CHK. BY: **HFN**

SCALE: **NTS**

DWG. #: **TLI009**

SECTION

**2**

OF 13

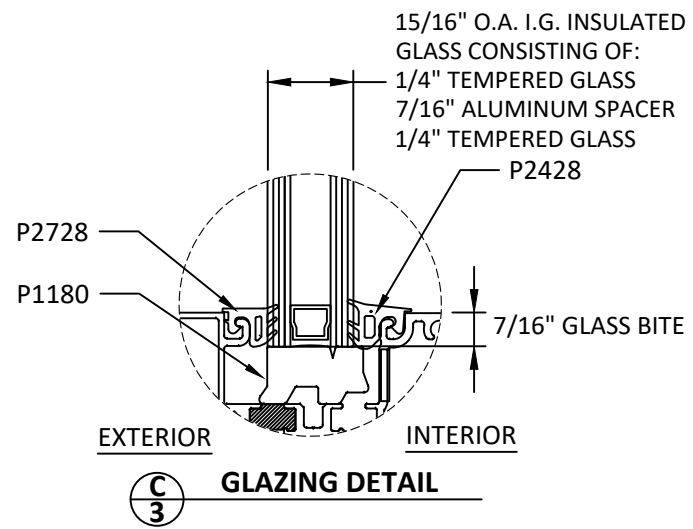
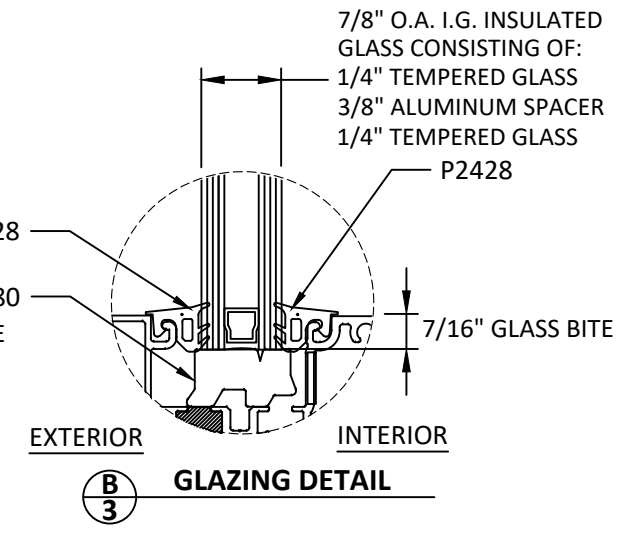
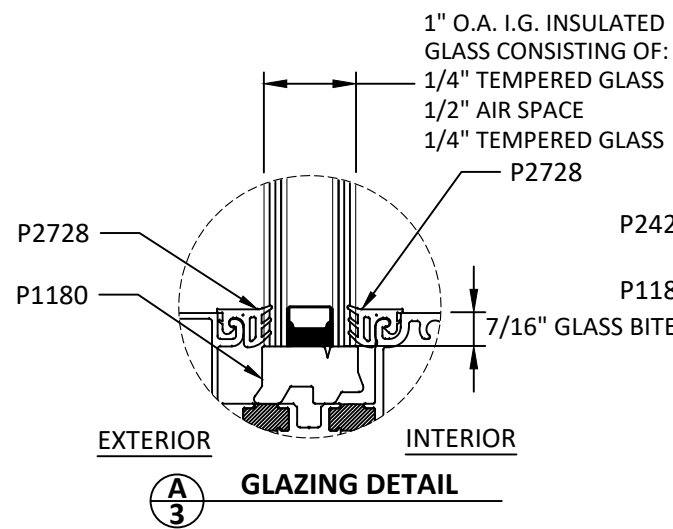
# GLAZING DETAILS AND DESIGN PRESSURE TABLE

**TUBELITE**  
DEPENDABLE  
LEADERS IN ECO-EFFICIENT STOREFRONT,  
CURTAINWALL AND ENTRANCE SYSTEMS

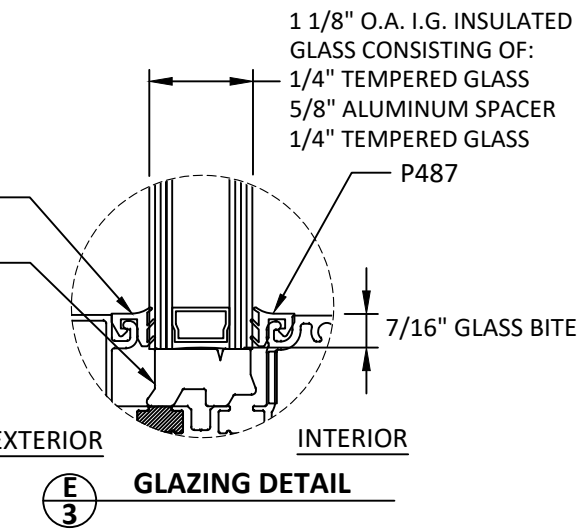
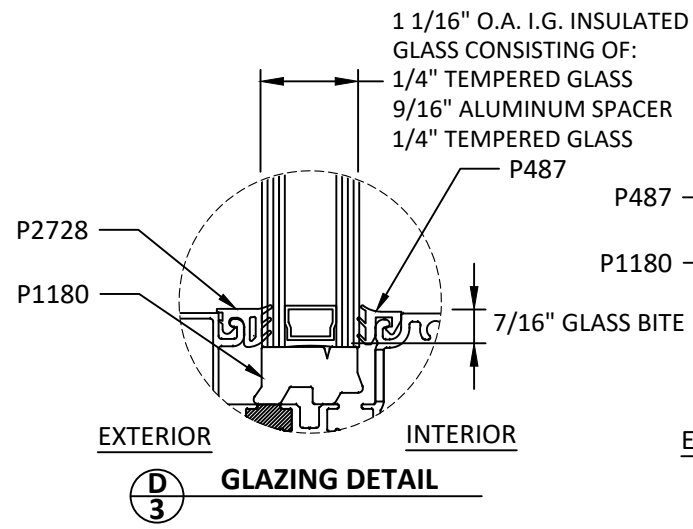
3056 WALKER RIDGE DRIVE N.W.  
WALKER, MICHIGAN 49544  
PH: 800 866 2227 FX: 616 301 0008

DESIGN PRESSURE TABLE: GLAZING CAPACITY BY TYPE		
D.L.O. WIDTH (IN)	D.L.O. HEIGHT (IN)	DESIGN PRESSURE (+/- PSF)
		TYPE 'A'
40	88	42.5
	91	42.0
	94	41.7
	97	41.3
	100	41.0
	103	40.7
	106.81	40.4
43	88	40.4
	91	40.0
	94	39.6
	97	39.2
	100	38.9
	103	38.6
	106.81	38.2
46	88	38.6
	91	38.2
	94	37.8
	97	37.4
	100	37.0
	103	36.7
	106.81	36.4
49	88	37.1
	91	36.6
	94	36.2
	97	35.8
	100	35.5
	103	35.1
	106.81	34.8

DESIGN PRESSURE TABLE: GLAZING CAPACITY BY TYPE		
D.L.O. WIDTH (IN)	D.L.O. HEIGHT (IN)	DESIGN PRESSURE (+/- PSF)
		TYPE 'A'
52	88	35.4
	91	35.3
	94	34.9
	97	34.5
	100	34.1
	103	33.8
	106.81	33.4
55	88	33.5
	91	33.5
	94	33.5
	97	33.3
	100	32.9
	103	32.5
	106.81	32.1
58	88	31.7
	91	31.7
	94	31.7
	97	31.7
	100	31.7
	103	31.5
	106.81	31.1
61.375	88	30.0
	91	30.0
	94	30.0
	97	30.0
	100	30.0
	103	30.0
	106.81	30.0



- GLAZING NOTES:**
- GLASS TYPE COMPLIES WITH ASTM E1300 REQUIREMENTS AS WELL AS APPLICABLE SAFETY GLAZING REQUIREMENTS PER THE FBC. TEMPER AND SAFETY GLAZING REQUIREMENTS SHALL BE REVIEWED ON A SITE SPECIFIC BASIS.
  - SETTING BLOCK DUROMETER HARDNESS OF 70-90 (SHORE A) AS REFERENCED IN FBC CHAPTER 24.
  - TWO APPROVED SETTING BLOCKS SHALL BE USED FOR GLASS WIDER THAN 36" AS PER FBC CHAPTER 24.
  - D.L.O. AND DESIGN PRESSURES MAY NOT EXCEED MAX VALUES IN SIZE CHARTS.

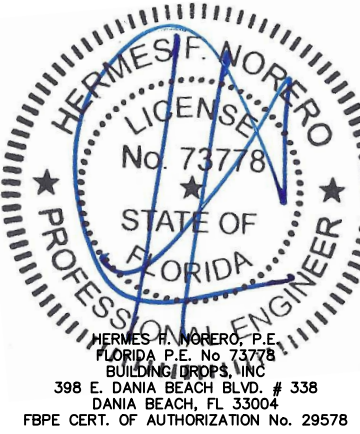


TITLE: EIT/US SERIES 24650  
STOREFRONT SYSTEM  
(NON-HVHZ)/(NON-IMPACT)  
GLAZING DETAILS AND DESIGN  
PRESSURE TABLE

PREPARED BY:  
**BUILDING DROPS, INC.**  
398 E. DANIA BEACH BLVD., STE. 338  
DANIA BEACH, FL 33004  
PH: (954) 959-8478  
FAX: (954) 744-4738  
WEB: www.buildingdrops.com

REMARKS	BY	DATE

THE INSTALLATION DETAILS DESCRIBED HEREIN ARE GENERIC AND MAY NOT REFLECT ACTUAL CONDITIONS FOR A SPECIFIC SITE. IF SITE CONDITIONS CAUSE INSTALLATION TO DEVIATE FROM THE REQUIREMENTS DETAILED HEREIN, A LICENSED ENGINEER OR ARCHITECT SHALL PREPARE SITE SPECIFIC DOCUMENTS FOR USE WITH THIS DOCUMENT



FL #:  
**FL20393**

DATE: **10.28.20**

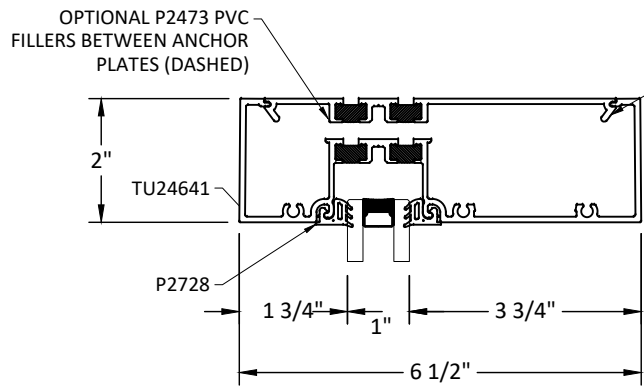
DWG. BY: **ER**      CHK. BY: **HFN**

SCALE: **NTS**

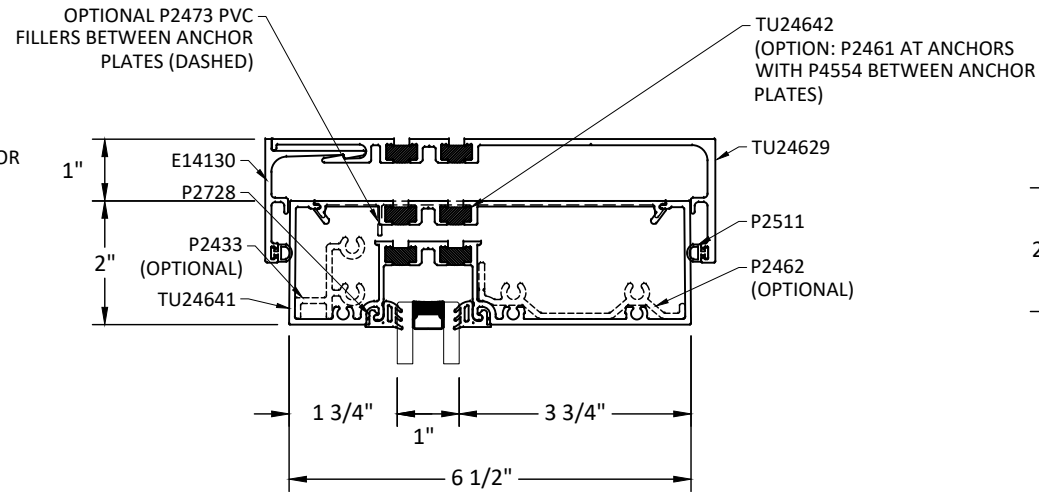
DWG. #: **TLI009**

SECTION  
**3**  
OF 13

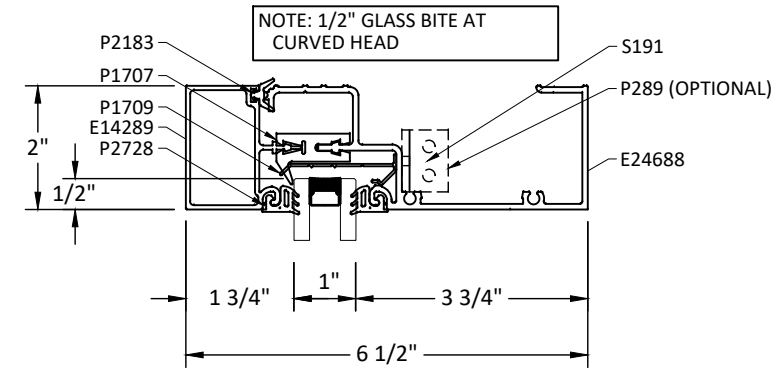
# HORIZONTAL DETAILS



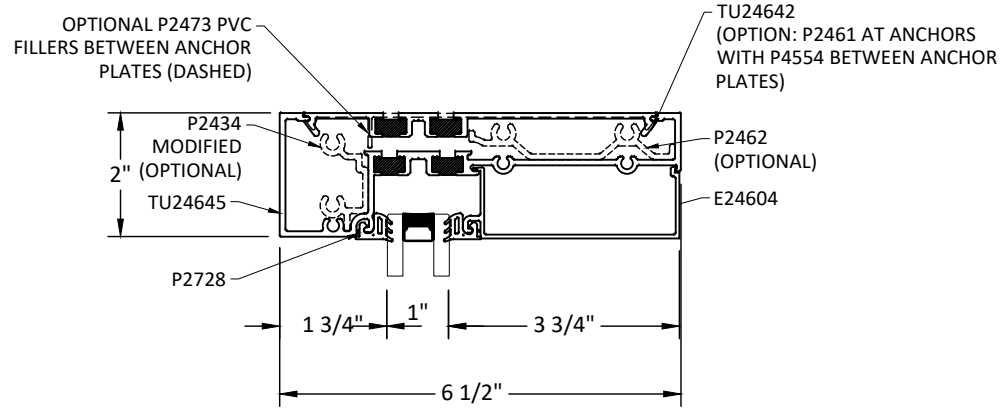
**A**  
4  
**STANDARD HEAD**  
STANDARD HEAD



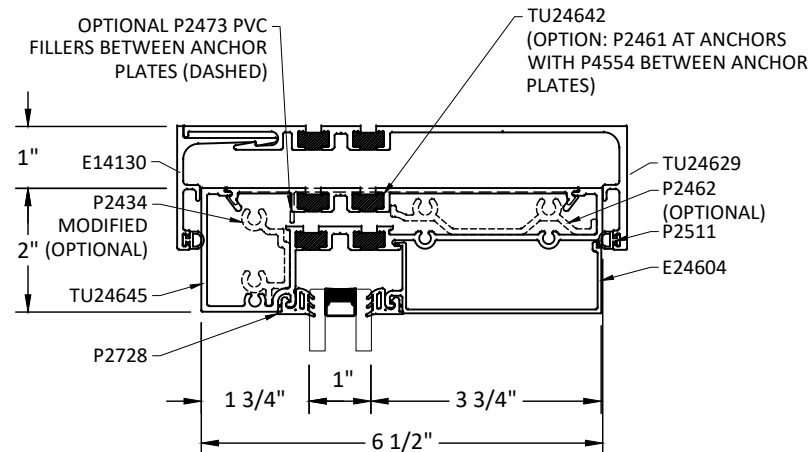
**B**  
4  
**OPTIONAL HEAD**  
HEAD W/ HEAD RECEPTOR



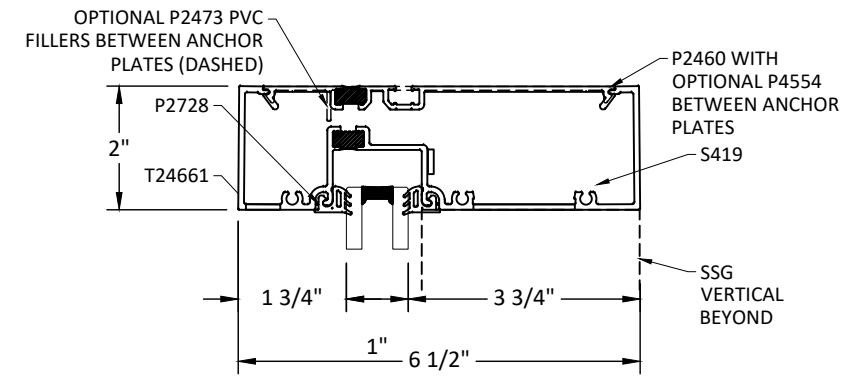
**C**  
4  
**OPTIONAL HEAD**  
CURVABLE HEAD OPTION



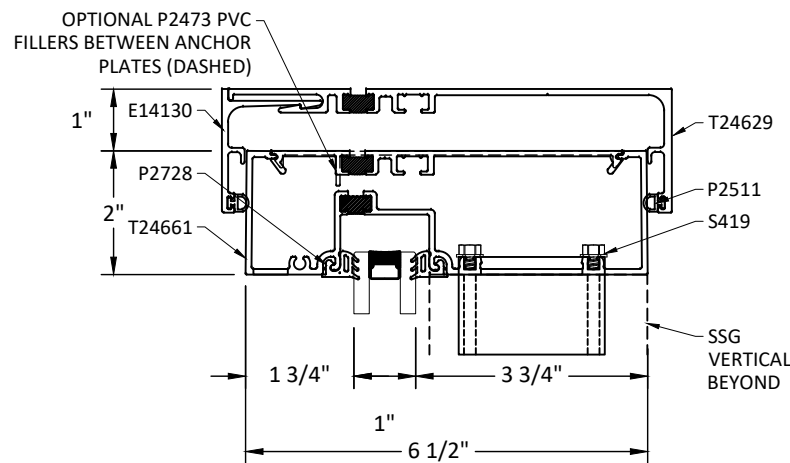
**D**  
4  
**OPTIONAL HEAD**  
HEAD W/ GLAZING STOP AT INTERIOR



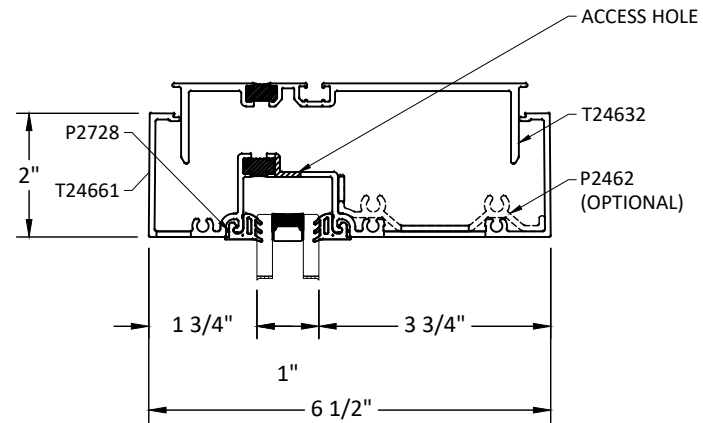
**E**  
4  
**OPTIONAL HEAD**  
EXTERIOR GLAZE HEAD/ HEAD RECEPTOR



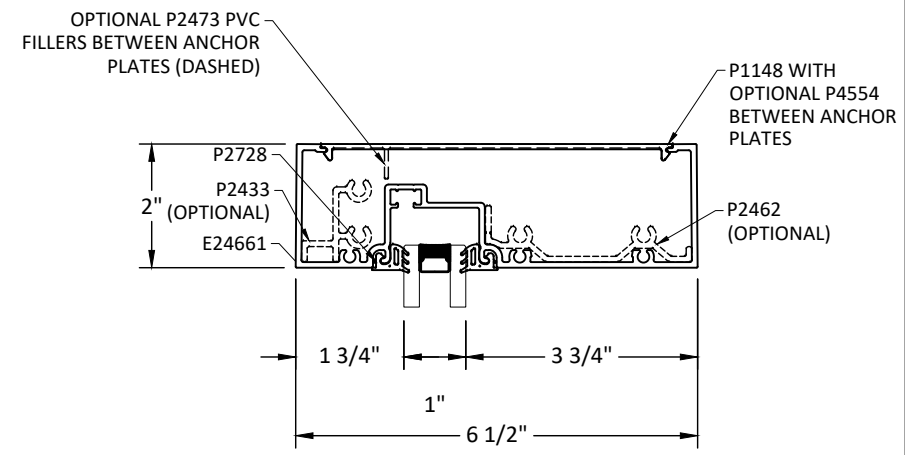
**F**  
4  
**OPTIONAL HEAD**  
USE WITH SSG MULLION



**G**  
4  
**OPTIONAL HEAD**  
HEAD W/ HEAD RECEPTOR



**H**  
4  
**OPTIONAL HEAD**  
HEAD W/ ANCHOR CHANNEL



**I**  
4  
**STANDARD HEAD**  
STANDARD HEAD

**TUBELITE**  
DEPENDABLE  
LEADERS IN ECO-EFFICIENT STOREFRONT,  
CURTAINWALL AND ENTRANCE SYSTEMS

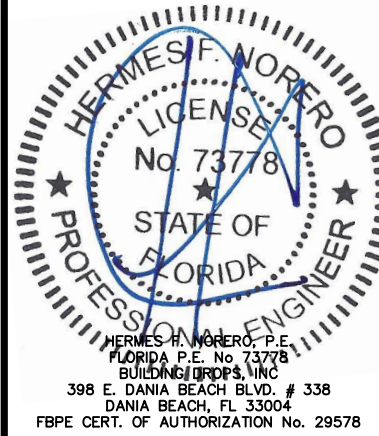
3056 WALKER RIDGE DRIVE N.W.  
WALKER, MICHIGAN 49544  
PH: 800 866 2227 FX: 616 301 0008

TITLE: E/T/U/SERIES 24650  
STOREFRONT SYSTEM  
(NON-HVHZ)(NON-IMPACT)  
HORIZONTAL DETAILS

PREPARED BY:  
**BUILDING DROPS, INC.**  
398 E. DANIA BEACH BLVD., STE. 338  
DANIA BEACH, FL 33004  
PH: (954) 399-8478  
FAX: (954) 744-4738  
WEB: www.buildingdrops.com

REMARKS	BY	DATE

THE INSTALLATION DETAILS DESCRIBED HEREIN ARE GENERIC AND MAY NOT REFLECT ACTUAL CONDITIONS FOR A SPECIFIC SITE. IF SITE CONDITIONS CAUSE INSTALLATION TO DEVIATE FROM THE REQUIREMENTS DETAILED HEREIN, A LICENSED ENGINEER OR ARCHITECT SHALL PREPARE SITE SPECIFIC DOCUMENTS FOR USE WITH THIS DOCUMENT



FL #:

**FL20393**

DATE: **10.28.20**

DWG. BY:	CHK. BY:
<b>ER</b>	<b>HFN</b>

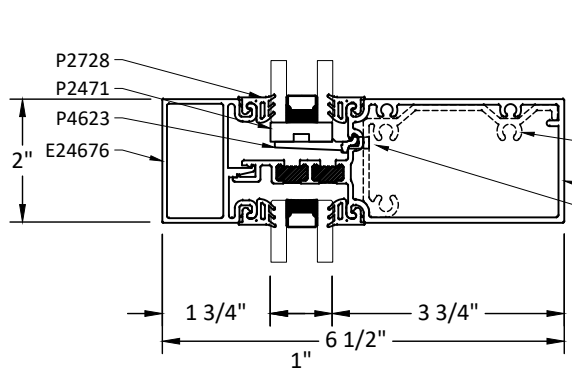
SCALE: **NTS**

DWG. #: **TLI009**

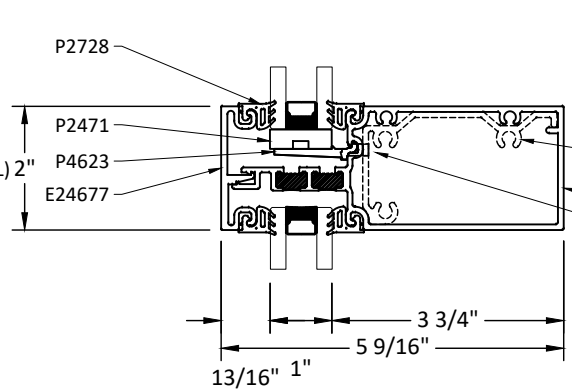
SECTION

**4**

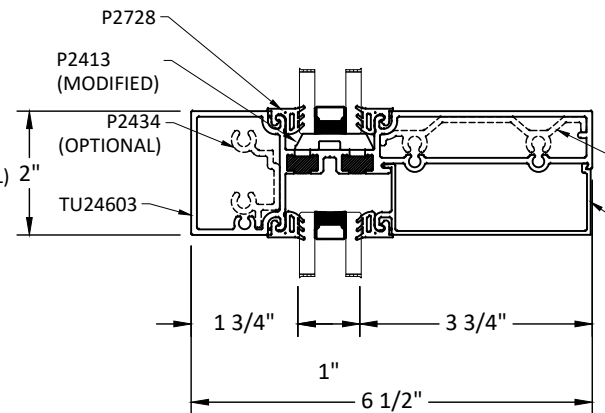
12/21/2020 11:26 AM



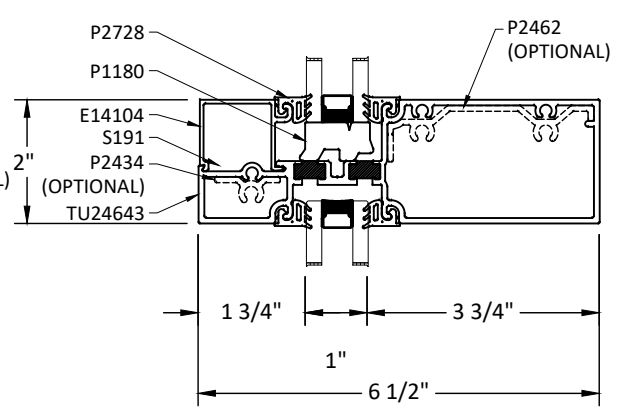
**A**  
**5** **HORIZONTAL**  
OPTIONAL AT SSG VERTICAL  
W/ DEEP GLAZING STOP



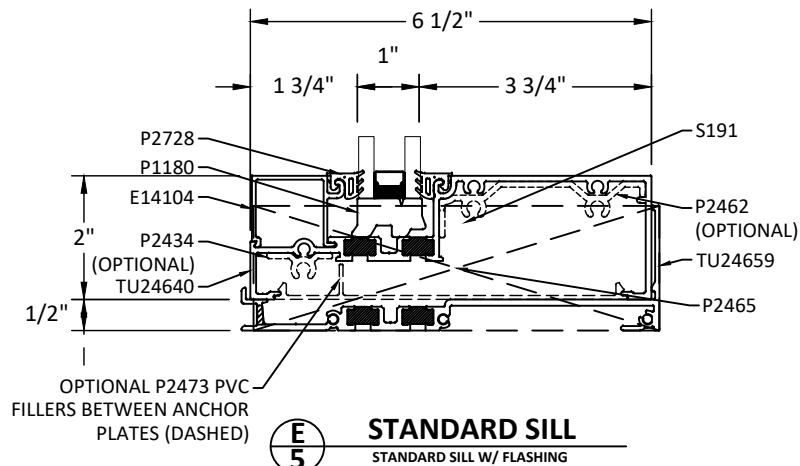
**B**  
**5** **HORIZONTAL**  
OPTIONAL AT SSG VERTICAL  
W/ SHALLOW GLAZING STOP



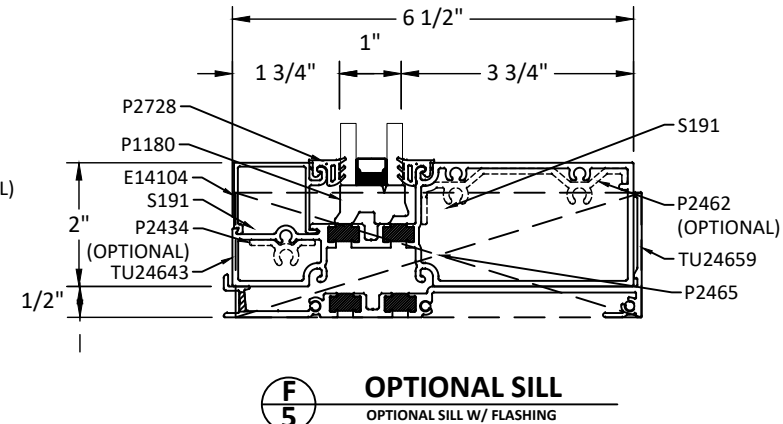
**C**  
**6** **HORIZONTAL**  
INSIDE GLAZED HORIZONTAL



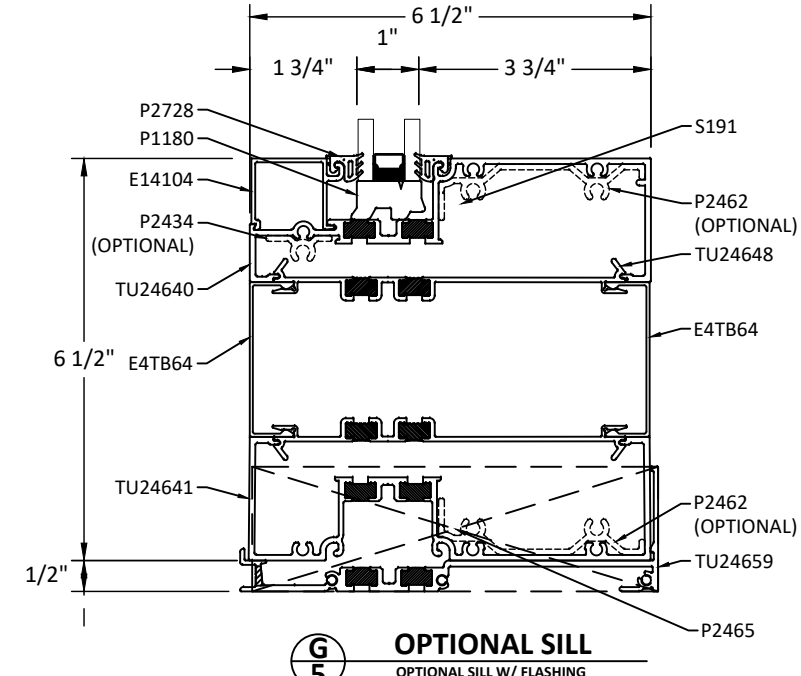
**D**  
**6** **HORIZONTAL**  
INTERMEDIATE HORIZONTAL



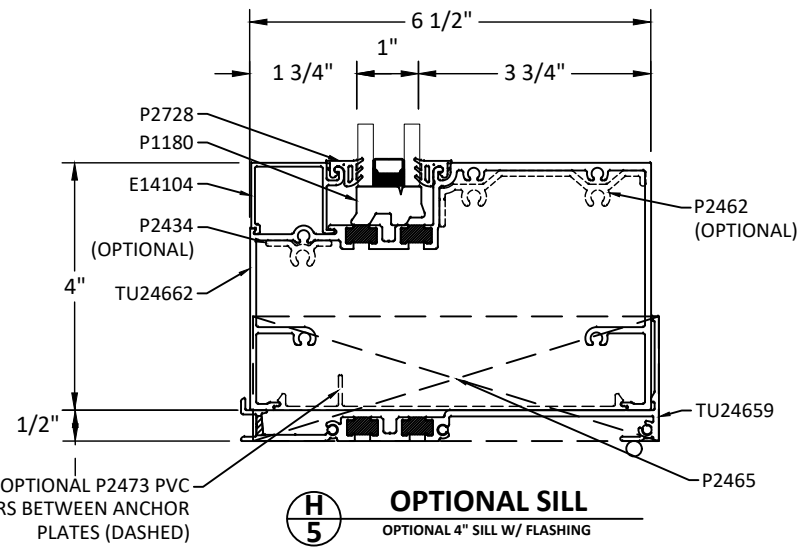
**E**  
**5** **STANDARD SILL**  
STANDARD SILL W/ FLASHING



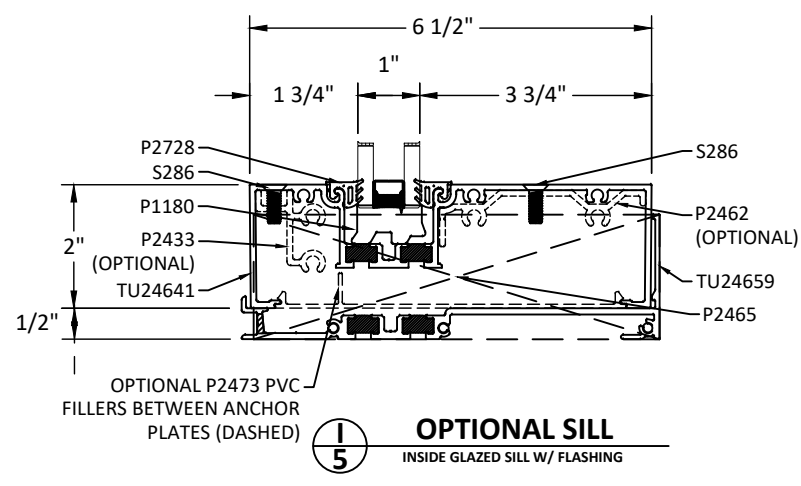
**F**  
**5** **OPTIONAL SILL**  
OPTIONAL SILL W/ FLASHING



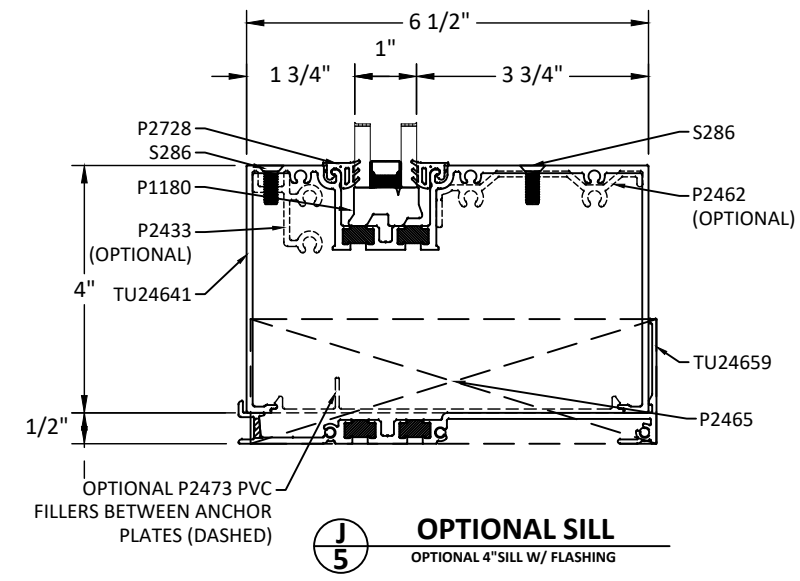
**G**  
**5** **OPTIONAL SILL**  
OPTIONAL SILL W/ FLASHING



**H**  
**5** **OPTIONAL SILL**  
OPTIONAL 4\"/>



**I**  
**5** **OPTIONAL SILL**  
INSIDE GLAZED SILL W/ FLASHING



**J**  
**5** **OPTIONAL SILL**  
OPTIONAL 4\"/>

# TUBELITE<sup>®</sup>

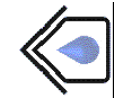
**DEPENDABLE**

LEADERS IN ECO-EFFICIENT STOREFRONT,  
CURTAINWALL AND ENTRANCE SYSTEMS

3056 WALKER RIDGE DRIVE N.W.  
WALKER, MICHIGAN 49544  
PH: 800 866 2227 FX: 616 301 0008

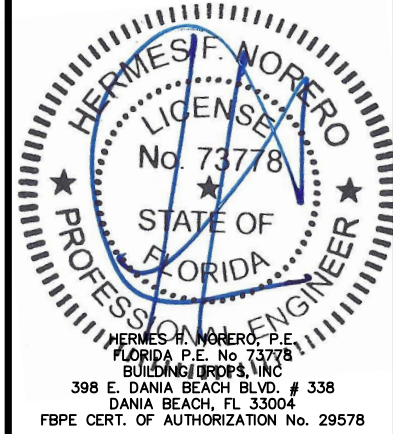
TITLE: E/T/U/SERIES 24650  
STOREFRONT SYSTEM  
(NON-HVHZ)(NON-IMPACT)  
HORIZONTAL DETAILS (CONT.)

PREPARED BY:  
**BUILDING DROPS, INC.**  
398 E. DANIA BEACH BLVD., STE. 338  
DANIA BEACH, FL 33004  
PH: (954) 959-8478  
FAX: (954) 744-4738  
WEB: www.buildingdrops.com



REMARKS	BY	DATE

THE INSTALLATION DETAILS DESCRIBED HEREIN ARE GENERIC AND MAY NOT REFLECT ACTUAL CONDITIONS FOR A SPECIFIC SITE. IF SITE CONDITIONS CAUSE INSTALLATION TO DEVIATE FROM THE REQUIREMENTS DETAILED HEREIN, A LICENSED ENGINEER OR ARCHITECT SHALL PREPARE SITE SPECIFIC DOCUMENTS FOR USE WITH THIS DOCUMENT



FL #:  
**FL20393**

DATE: **10.28.20**

DWG. BY: **ER**      CHK. BY: **HFN**

SCALE: **NTS**

DWG. #: **TLI009**

SECTION

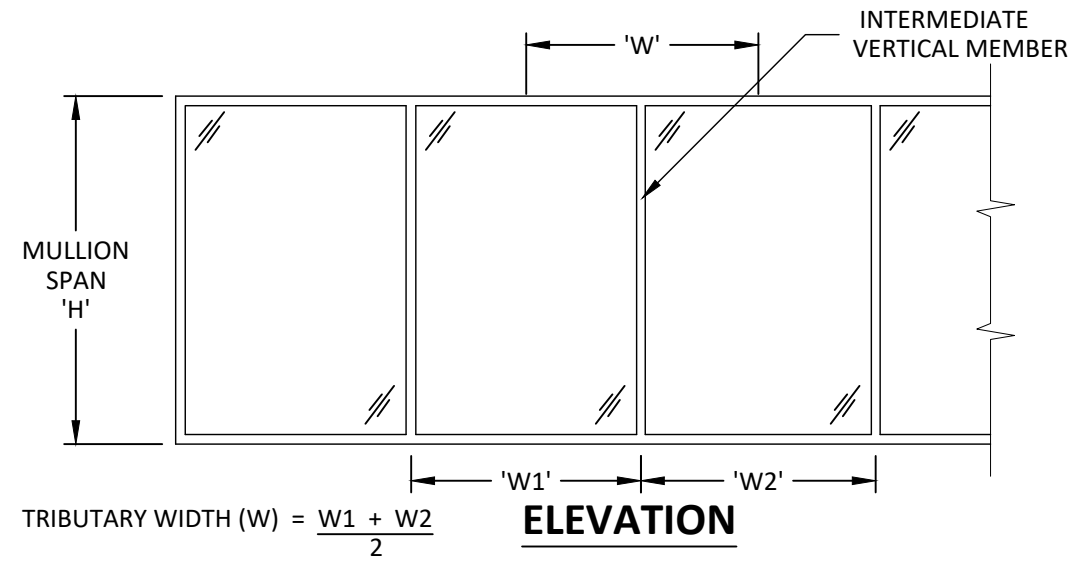
**5**

c:\users\p50\onedrive - building drops, inc.\tl1009 2020-12-21.dwg

# VERTICAL DETAILS AND DESIGN PRESSURES

DESIGN PRESSURE TABLE (+/- PSF) - WITH DETAIL B/6 OR D/6

		MULLION TRIBUTARY WIDTH (INCHES)									
		27	33	39	45	51	57	63.188	66	72	78
MULLION SPAN (INCHES)	102	45.0	45.0	45.0	45.0	45.0	44.8	42.1	41.2	39.5	38.2
	108	45.0	45.0	45.0	45.0	44.6	41.4	38.8	37.9	36.2	-
	114	45.0	45.0	45.0	45.0	41.5	38.5	36.0	35.1	33.4	-
	120	45.0	45.0	45.0	42.7	38.9	35.9	33.6	32.7	-	-
	126	45.0	45.0	45.0	40.3	36.6	33.7	31.4	-	-	-
	130.5	45.0	45.0	43.3	38.6	35.0	32.2	30.0	-	-	-
	138	45.0	45.0	38.6	33.8	30.2	27.4	-	-	-	-
	144	45.0	39.7	33.8	29.6	26.4	24.0	-	-	-	-
	150	42.5	35.0	29.9	26.1	23.3	-	-	-	-	-

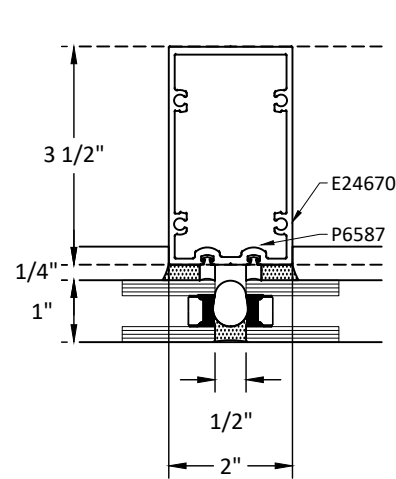


DESIGN PRESSURE TABLE (+/- PSF) - WITH DETAILS A/6, C/6, E/6, OR F/6

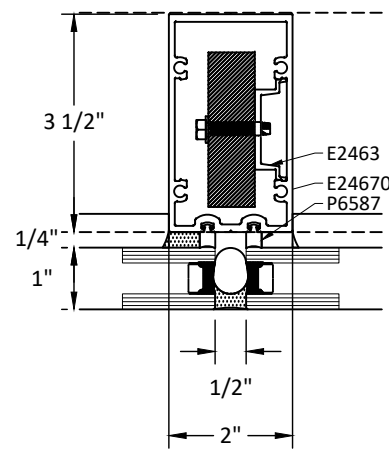
		MULLION TRIBUTARY WIDTH (INCHES)									
		27	33	39	45	51	57	63	66	72	78
MULLION SPAN (INCHES)	90	45.0	45.0	45.0	45.0	43.2	40.0	37.6	36.7	35.3	34.3
	96	45.0	45.0	43.6	38.7	35.0	32.3	30.2	29.4	28.1	27.1
	102	45.0	41.9	36.1	31.9	28.8	26.5	24.6	23.9	22.7	21.8
	108	42.4	35.2	30.2	26.6	24.0	22.0	20.4	19.8	18.7	17.9
	114	36.0	29.8	25.5	22.5	20.2	18.5	17.1	16.5	15.6	-
	120	30.8	25.4	21.8	19.2	17.2	15.7	-	-	-	-
	126	26.5	21.9	18.8	16.5	-	-	-	-	-	-
	130	23.9	19.7	16.8	-	-	-	-	-	-	-
	138	20.1	16.6	-	-	-	-	-	-	-	-

DESIGN PRESSURE TABLE (+/- PSF) - WITH DETAILS G/7, K/7 OR L/7

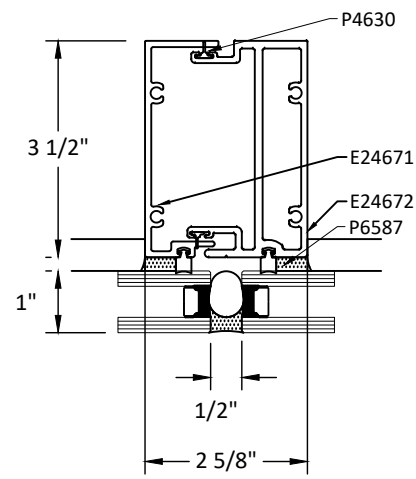
		MULLION TRIBUTARY WIDTH (INCHES)									
		25	29	33	37	41	45	48	52	56	58
MULLION SPAN (INCHES)	138	45.0	45.0	45.0	45.0	45.0	45.0	45.0	45.0	45.0	45.0
	144	45.0	45.0	45.0	45.0	45.0	45.0	45.0	45.0	45.0	-
	150	45.0	45.0	45.0	45.0	45.0	45.0	45.0	45.0	45.0	-
	156	45.0	45.0	45.0	45.0	45.0	45.0	45.0	43.6	-	-
	162	45.0	45.0	45.0	45.0	45.0	45.0	41.2	38.8	-	-
	168	45.0	45.0	45.0	44.4	40.3	36.9	34.7	-	-	-
	174	45.0	45.0	44.6	39.9	36.2	33.1	-	-	-	-
	180	45.0	45.0	40.2	36.0	32.6	-	-	-	-	-
	186	45.0	41.3	36.4	32.6	29.5	-	-	-	-	-



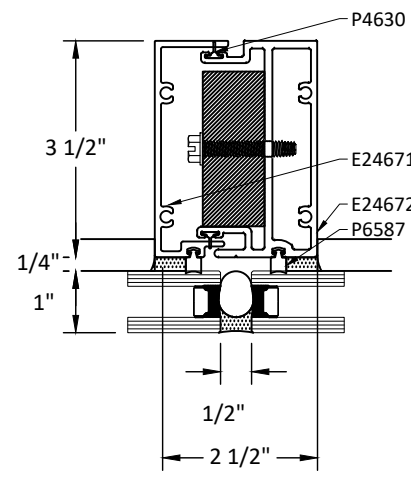
**A** MULLION OPTION 1  
OPTIONAL SSG VERTICAL



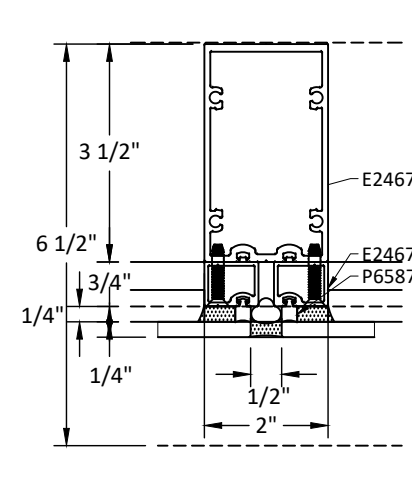
**B** MULLION OPTION 2  
REINFORCED SSG VERTICAL



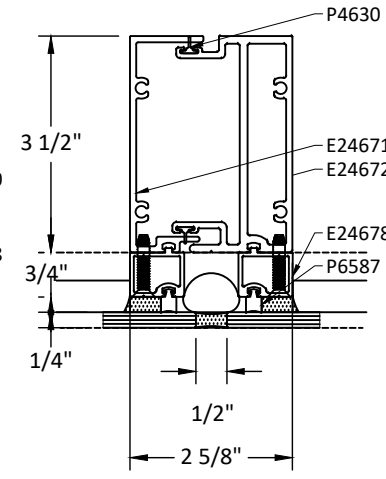
**C** MULLION OPTION 3  
OPTIONAL EXPANSION SSG VERTICAL



**D** MULLION OPTION 4  
REINFORCED EXPANSION SSG VERTICAL



**E** MULLION OPTION 5  
SSG VERTICAL WITH REDUCER FOR 1/4" GLAZING



**F** MULLION OPTION 6  
EXPANSION SSG VERTICAL W/ REDUCER FOR 1/4" GLAZING

**TUBELITE**  
DEPENDABLE  
LEADERS IN ECO-EFFICIENT STOREFRONT,  
CURTAINWALL AND ENTRANCE SYSTEMS

3056 WALKER RIDGE DRIVE N.W.  
WALKER, MICHIGAN 49544  
PH: 800 866 2227 FX: 616 301 0008

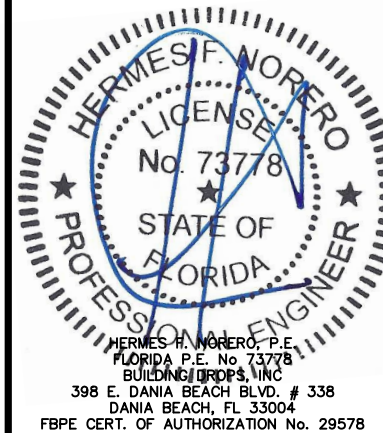
TITLE: EIT/US SERIES 24650  
STOREFRONT SYSTEM  
(NON-HVHZ)(NON-IMPACT)  
VERTICAL DETAILS AND DESIGN  
PRESSURES

PREPARED BY:  
BUILDING DROPS, INC.  
398 E. DANIA BEACH BLVD., STE. 338  
DANIA BEACH, FL 33004  
PH: (954) 959-8478  
FAX: (954) 744-4738  
WEB: www.buildingdrops.com



REMARKS	BY	DATE

THE INSTALLATION DETAILS DESCRIBED HEREIN ARE GENERIC AND MAY NOT REFLECT ACTUAL CONDITIONS FOR A SPECIFIC SITE. IF SITE CONDITIONS CAUSE INSTALLATION TO DEVIATE FROM THE REQUIREMENTS DETAILED HEREIN, A LICENSED ENGINEER OR ARCHITECT SHALL PREPARE SITE SPECIFIC DOCUMENTS FOR USE WITH THIS DOCUMENT



FL #:  
**FL20393**

DATE: 10.28.20

DWG. BY: ER  
CHK. BY: HFN

SCALE: NTS

DWG. #: TLI009

SECTION

6

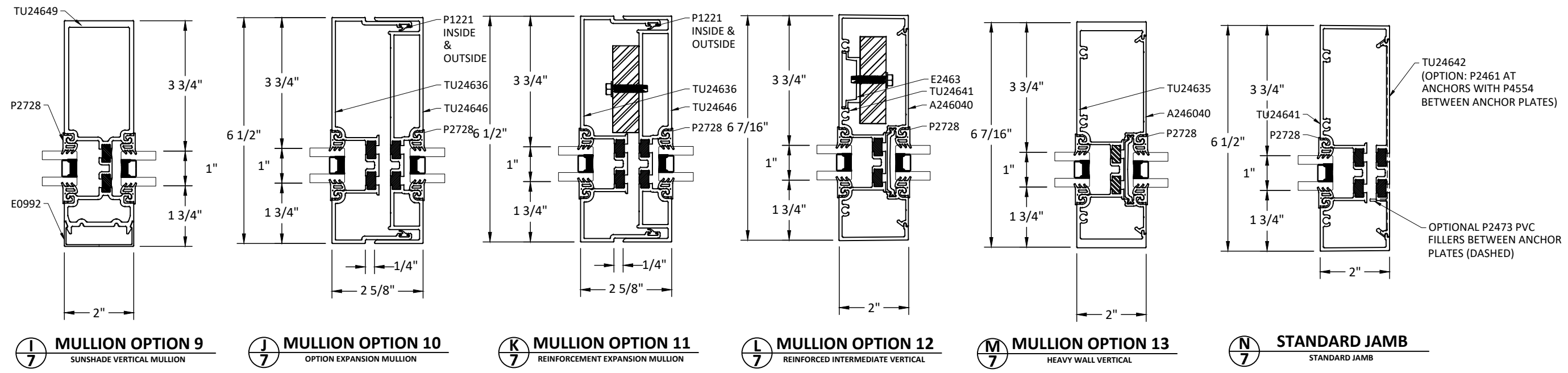
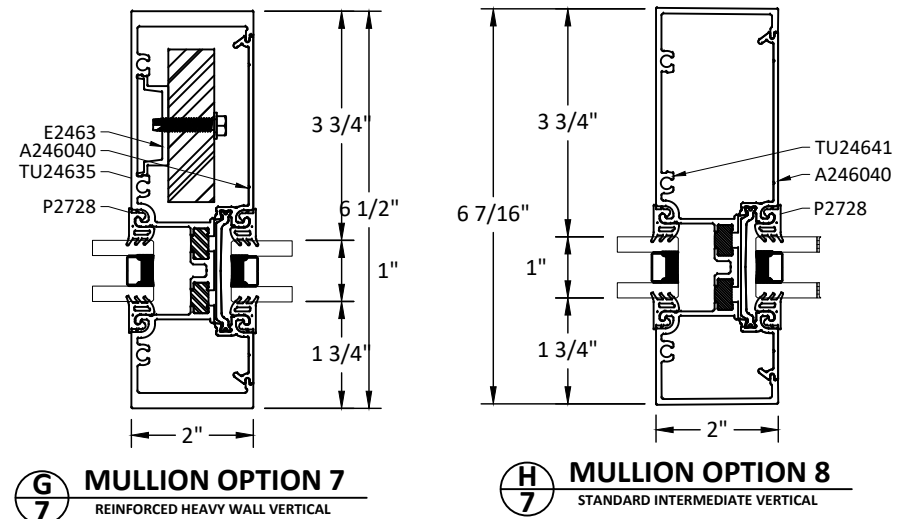
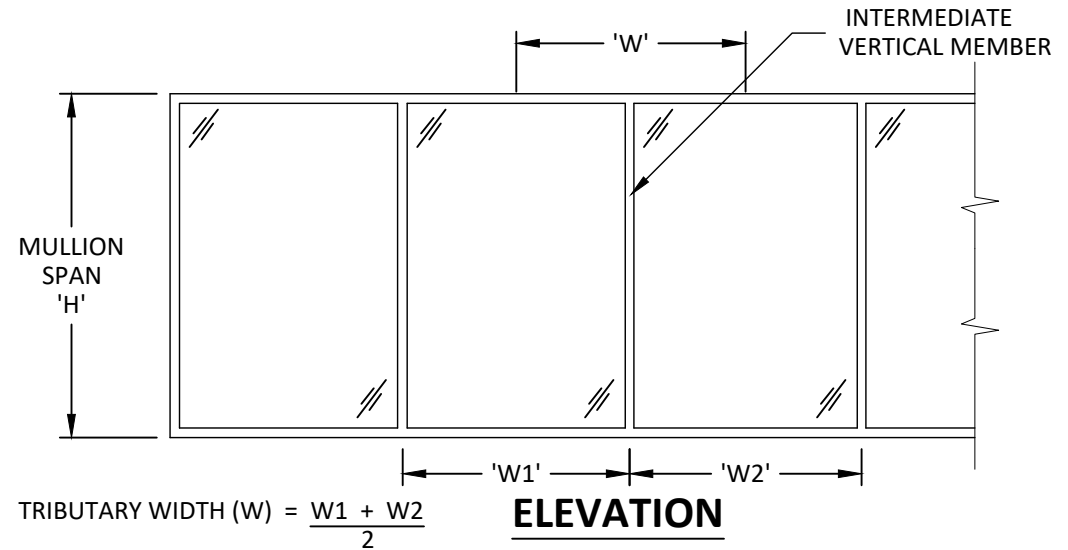
# VERTICAL DETAILS AND DESIGN PRESSURES (CONT.)

DESIGN PRESSURE TABLE (+/- PSF) - WITH DETAIL H/7, I/7 OR J/7

		MULLION TRIBUTARY WIDTH (INCHES)									
		25	29	33	37	41	45	46	50	54	58
MULLION SPAN (INCHES)	114	45.0	45.0	45.0	45.0	43.6	40.6	39.9	37.5	35.5	33.9
	120	45.0	45.0	45.0	44.5	40.9	38.1	37.4	35.2	33.2	-
	126	45.0	45.0	45.0	42.0	38.6	35.9	35.2	33.1	-	-
	132	45.0	45.0	43.8	39.8	36.5	33.9	33.3	31.2	-	-
	138	45.0	45.0	41.6	37.8	34.7	32.1	31.6	-	-	-
	144	45.0	44.5	39.7	36.0	33.0	30.5	30.0	-	-	-
	150	45.0	41.0	36.2	32.5	29.4	-	-	-	-	-
	156	42.1	36.4	32.1	28.8	26.1	-	-	-	-	-
162	37.6	32.5	28.7	25.7	-	-	-	-	-	-	

DESIGN PRESSURE TABLE (+/- PSF) - WITH DETAIL M/7 OR N/7

		MULLION TRIBUTARY WIDTH (INCHES)									
		25	29	33	37	41	45	48	52	56	58
MULLION SPAN (INCHES)	138	45.0	45.0	45.0	45.0	43.0	39.9	37.9	35.6	33.7	32.8
	144	45.0	45.0	45.0	44.7	41.0	37.9	36.0	33.8	31.9	-
	150	45.0	45.0	45.0	42.6	39.1	36.1	34.3	32.2	-	-
	156	45.0	45.0	45.0	40.8	37.3	34.5	32.7	-	-	-
	162	45.0	45.0	43.2	39.1	35.7	33.0	31.3	-	-	-
	168	45.0	45.0	41.5	37.5	34.3	31.7	30.0	-	-	-
	174	45.0	43.7	38.6	34.5	31.3	28.6	-	-	-	-
	180	45.0	39.5	34.8	31.1	28.2	-	-	-	-	-
186	41.4	35.8	31.5	28.2	25.5	-	-	-	-	-	



**TUBELITE**  
DEPENDABLE  
LEADERS IN ECO-EFFICIENT STOREFRONT,  
CURTAINWALL AND ENTRANCE SYSTEMS

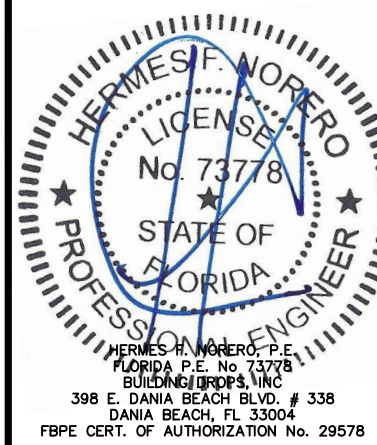
3056 WALKER RIDGE DRIVE N.W.  
WALKER, MICHIGAN 49544  
PH: 800 866 2227 FX: 616 301 0008

TITLE: E/T/U/SERIES 24650  
STOREFRONT SYSTEM  
(NON-HVHZ)/(NON-IMPACT)  
VERTICAL DETAILS AND DESIGN  
PRESSURES (CONT.)

PREPARED BY:  
**BUILDING DROPS, INC.**  
398 E. DANIA BEACH BLVD., STE. 338  
DANIA BEACH, FL 33004  
PH: (954) 959-8478  
FAX: (954) 744-4738  
WEB: www.buildingdrops.com

REMARKS	BY	DATE

THE INSTALLATION DETAILS DESCRIBED HEREIN ARE GENERIC AND MAY NOT REFLECT ACTUAL CONDITIONS FOR A SPECIFIC SITE. IF SITE CONDITIONS CAUSE INSTALLATION TO DEVIATE FROM THE REQUIREMENTS DETAILED HEREIN, A LICENSED ENGINEER OR ARCHITECT SHALL PREPARE SITE SPECIFIC DOCUMENTS FOR USE WITH THIS DOCUMENT



FL #: **FL20393**

DATE: **10.28.20**

DWG. BY: **ER**      CHK. BY: **HFN**

SCALE: **NTS**

DWG. #: **TLI009**

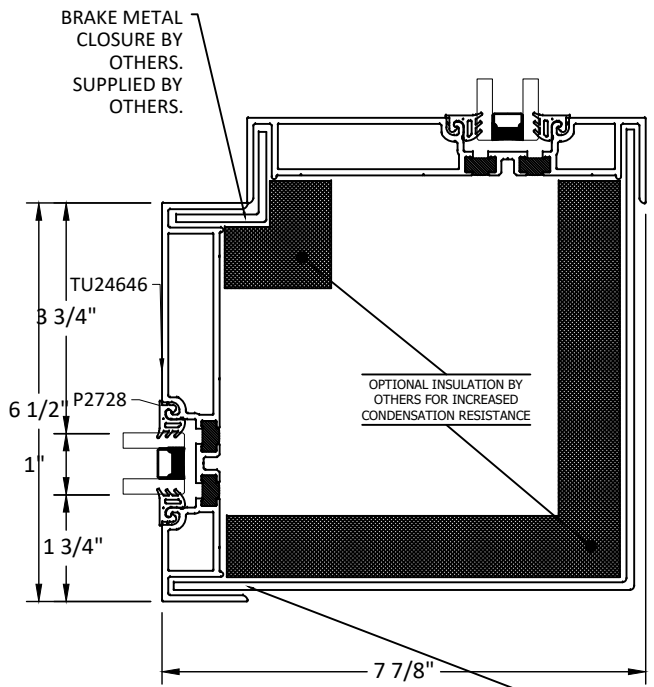
SECTION **7**

OF 13

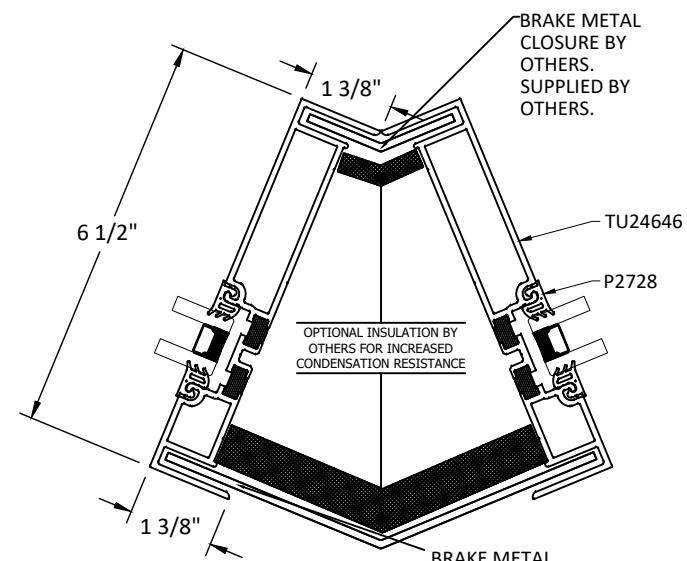
12/21/2020 11:26 AM

# CORNER DETAILS

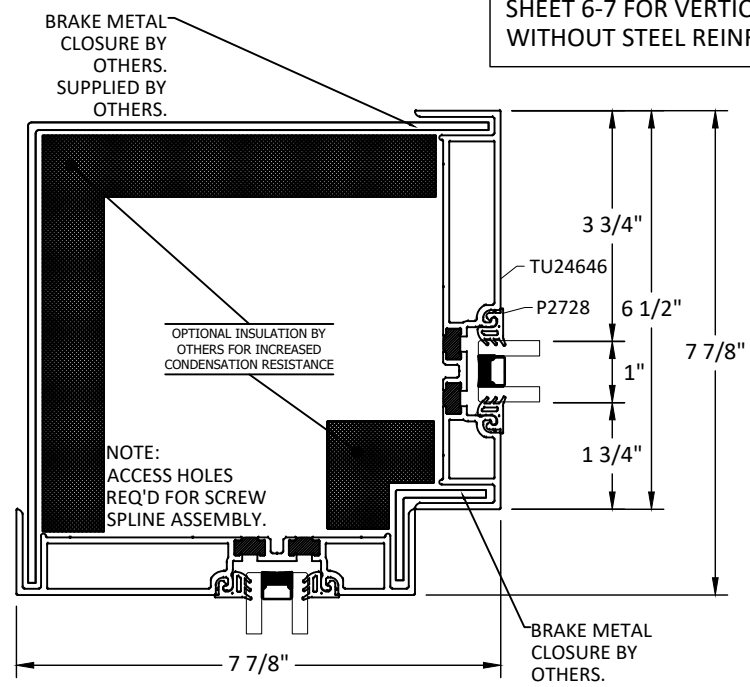
NOTE:  
CORNER CONDITIONS ARE  
QUALIFIED FOR DESIGN PRESSURE  
VALUES AND SIZES SHOWN ON  
SHEET 6-7 FOR VERTICAL MEMBERS  
WITHOUT STEEL REINFORCEMENT



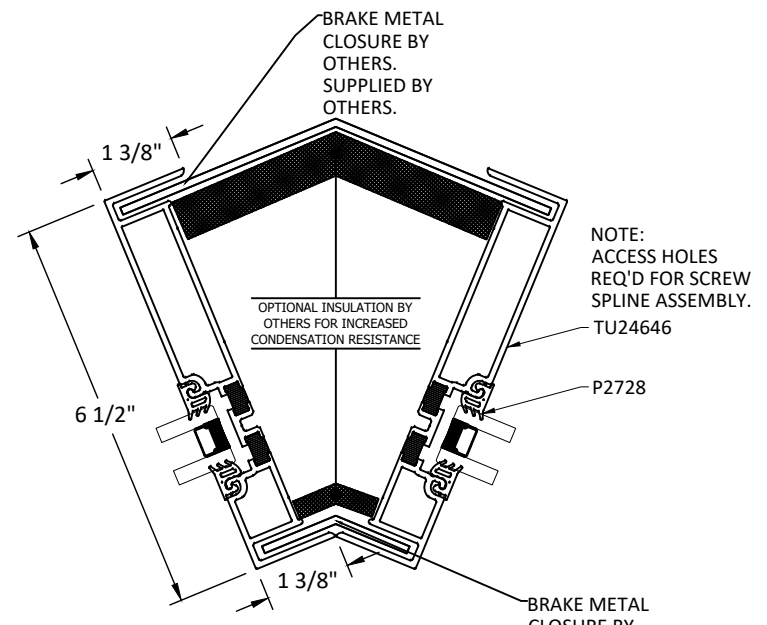
**A**  
**8** 90° CORNER DETAIL  
STANDARD 90° OUTSIDE CORNER



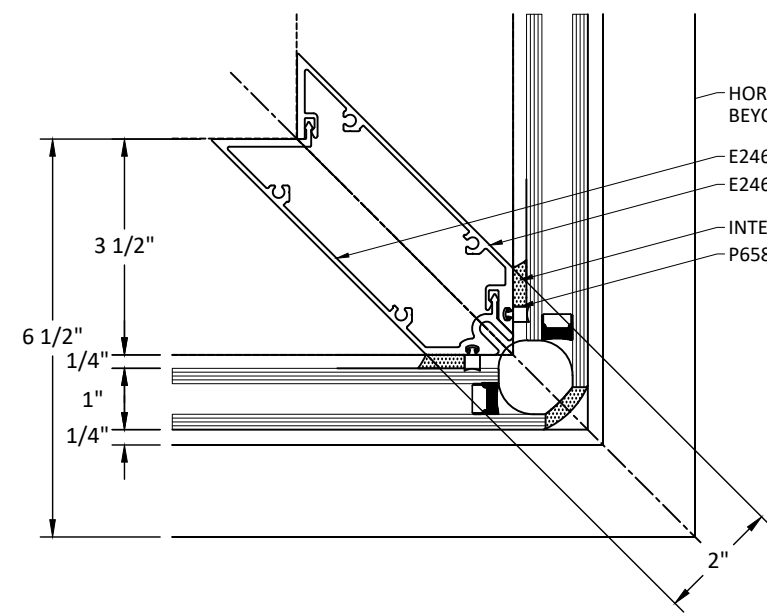
**B**  
**8** 135° OUTSIDE CORNER  
135° OUTSIDE CORNER



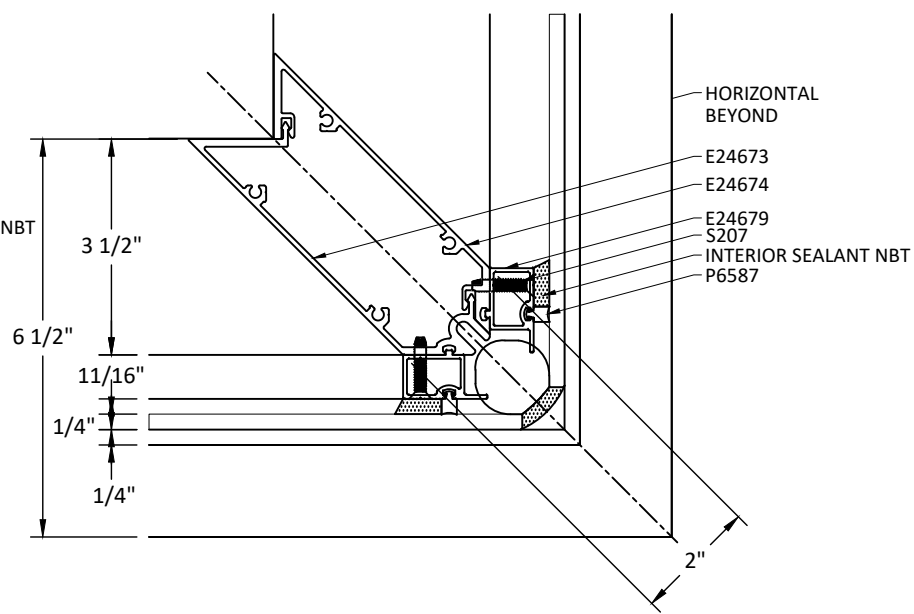
**C**  
**8** 90° CORNER DETAIL  
STANDARD 90° INSIDE CORNER



**D**  
**8** 135° INSIDE CORNER  
135° INSIDE CORNER



**E**  
**8** 90° CORNER DETAIL  
90° OUTSIDE SSG CORNER



**F**  
**8** 90° CORNER DETAIL  
90° OUTSIDE SSG CORNER W/ REDUCER  
FOR 1/4\"/>

**TUBELITE**  
DEPENDABLE  
LEADERS IN ECO-EFFICIENT STOREFRONT,  
CURTAINWALL AND ENTRANCE SYSTEMS

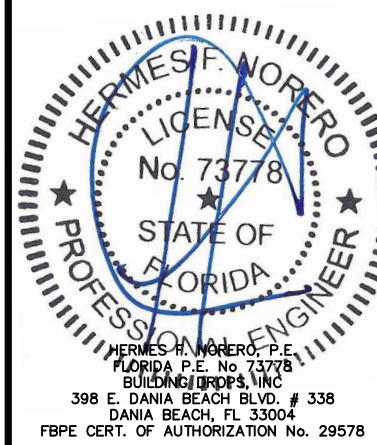
3056 WALKER RIDGE DRIVE N.W.  
WALKER, MICHIGAN 49544  
PH: 800 866 2227 FX: 616 301 0008

TITLE: EIT/US SERIES 24650  
STOREFRONT SYSTEM  
(NON-HVHZ)(NON-IMPACT)  
CORNER DETAILS

PREPARED BY:  
BUILDING DROPS, INC.  
398 E. DANIA BEACH BLVD., STE. 338  
DANIA BEACH, FL 33004  
PH: (954) 399-8478  
FAX: (954) 744-4738  
WEB: www.buildingdrops.com

REMARKS	BY	DATE

THE INSTALLATION DETAILS DESCRIBED HEREIN ARE GENERIC AND MAY NOT REFLECT ACTUAL CONDITIONS FOR A SPECIFIC SITE. IF SITE CONDITIONS CAUSE INSTALLATION TO DEVIATE FROM THE REQUIREMENTS DETAILED HEREIN, A LICENSED ENGINEER OR ARCHITECT SHALL PREPARE SITE SPECIFIC DOCUMENTS FOR USE WITH THIS DOCUMENT



FL #:  
**FL20393**

DATE: **10.28.20**

DWG. BY: **ER**      CHK. BY: **HFN**

SCALE: **NTS**

DWG. #: **TLI009**

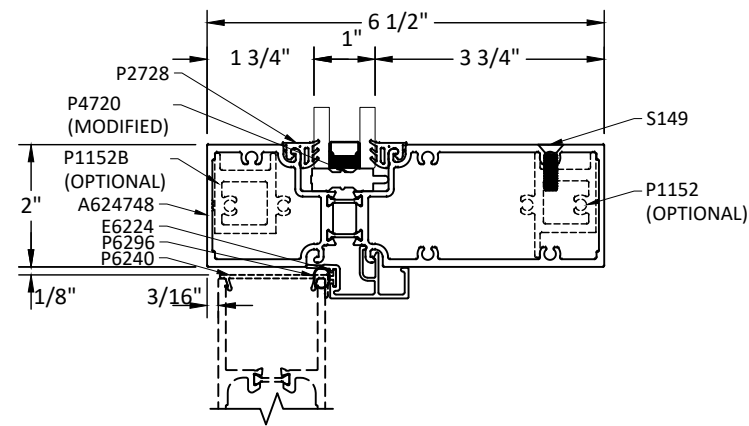
SECTION  
**8**

c:\users\p50\one-drive - building drops, inc.\tl1009 2020-12-21.dwg

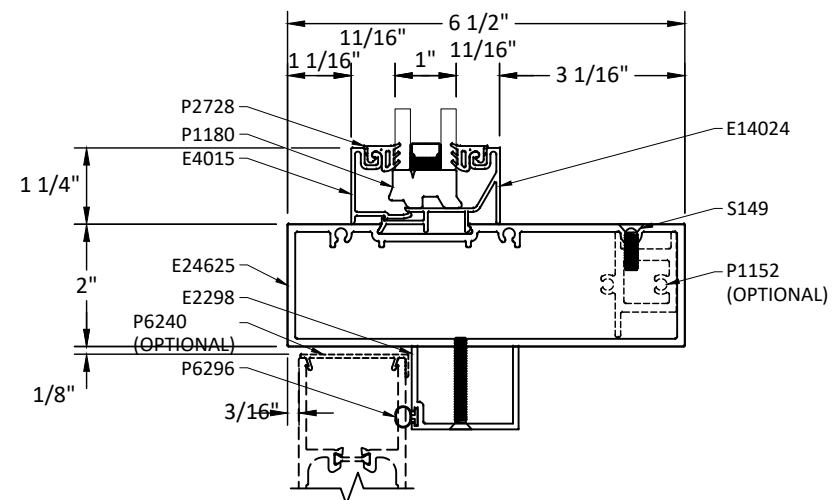


# DOOR DETAILS

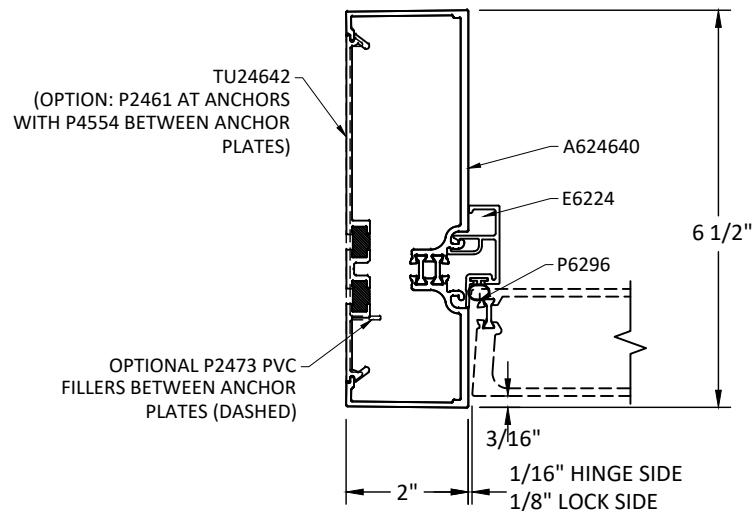
NOTE:  
DOOR SYSTEMS SHOWN ARE UNDER  
SEPARATE APPROVAL



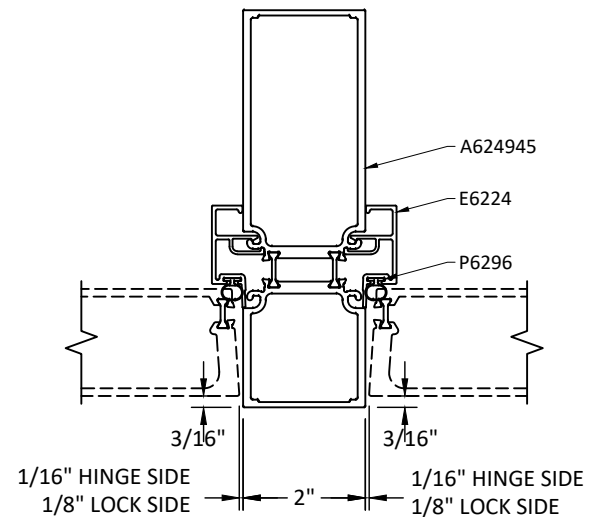
**A**  
9 DOOR TRANSOM  
STANDARD TRANSOM



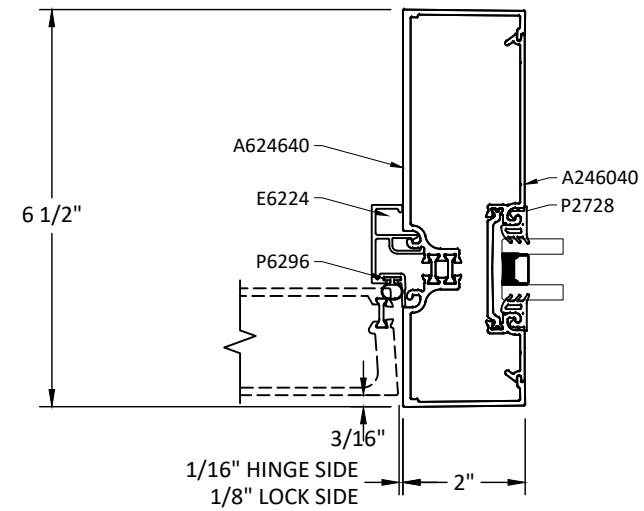
**B**  
9 DOOR TRANSOM  
STANDARD DOOR HEAD W/ OVERHEAD  
CONCEALED CLOSER



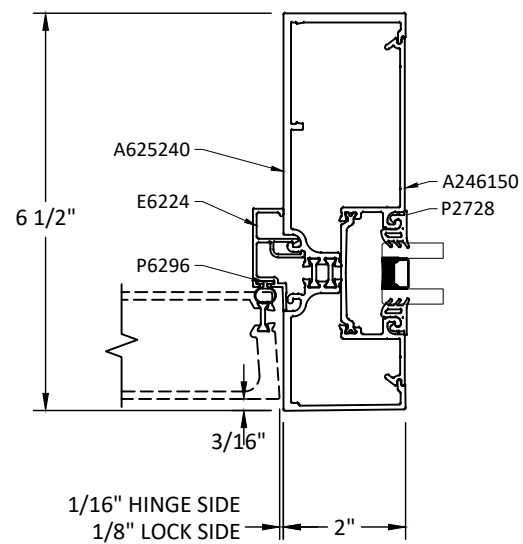
**C**  
9 DOOR JAMB  
STANDARD DOOR JAMB



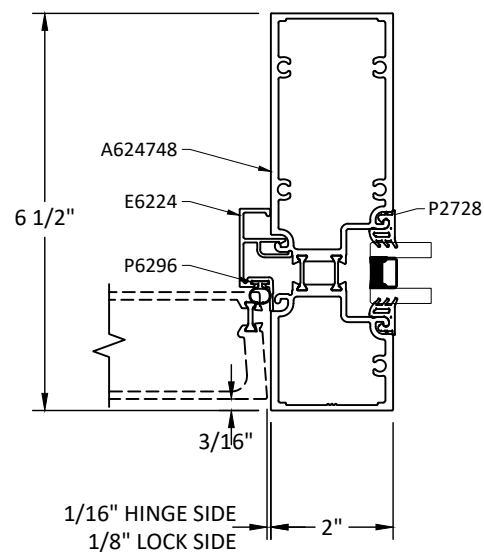
**D**  
9 OPTIONAL DOOR JAMB  
INTERMEDIATE VERTICAL FOR SHARED DOORS



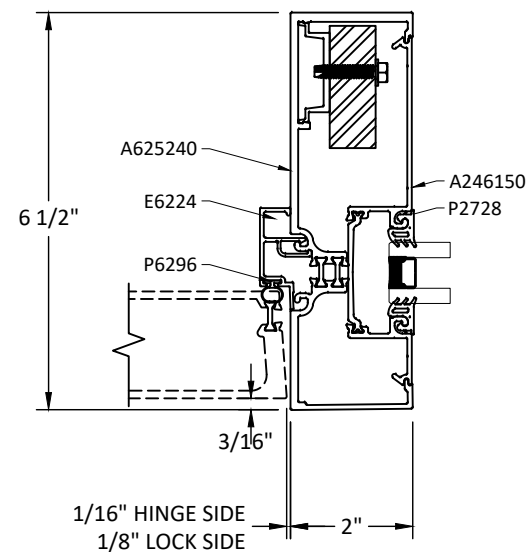
**E**  
9 OPTIONAL DOOR JAMB  
DOOR JAMB WITH SIDELITE



**F**  
9 DOOR JAMB  
OPEN BACK WITH SHALLOW POCKET FILLER  
AT SIDELITE



**G**  
9 DOOR JAMB  
OPEN BACK WITH POCKET FILLER  
AT SIDELITE



**H**  
9 DOOR JAMB  
REINFORCED OPEN BACK DOOR JAMB  
WITH DEEP POCKET FILLER AT SIDELITE

**TUBELITE**  
DEPENDABLE

LEADERS IN ECO-EFFICIENT STOREFRONT,  
CURTAINWALL AND ENTRANCE SYSTEMS

3056 WALKER RIDGE DRIVE N.W.  
WALKER, MICHIGAN 49544  
PH: 800 866 2227 FX: 616 301 0008

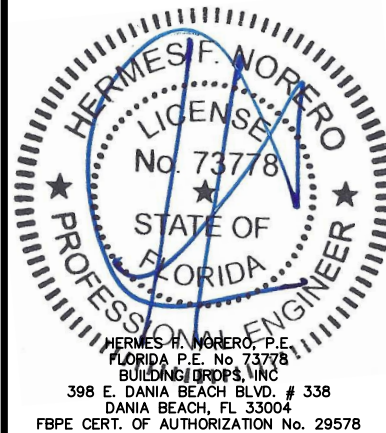
TITLE: E/T/U SERIES 24650  
STOREFRONT SYSTEM  
(NON-HVHZ)(NON-IMPACT)  
DOOR DETAILS

PREPARED BY:  
**BUILDING DROPS, INC.**  
398 E. DANIA BEACH BLVD., STE. 338  
DANIA BEACH, FL 33004  
PH: (954) 999-8478  
FAX: (954) 744-4738  
WEB: www.buildingdrops.com



REMARKS	BY	DATE

THE INSTALLATION DETAILS DESCRIBED HEREIN ARE GENERIC AND MAY NOT REFLECT ACTUAL CONDITIONS FOR A SPECIFIC SITE. IF SITE CONDITIONS CAUSE INSTALLATION TO DEVIATE FROM THE REQUIREMENTS DETAILED HEREIN, A LICENSED ENGINEER OR ARCHITECT SHALL PREPARE SITE SPECIFIC DOCUMENTS FOR USE WITH THIS DOCUMENT



FL #:  
**FL20393**

DATE: **10.28.20**

DWG. BY: **ER** CHK. BY: **HFN**

SCALE: **NTS**

DWG. #: **TLI009**

SECTION  
**9**

# DOOR MULLION DESIGN PRESSURE TABLES

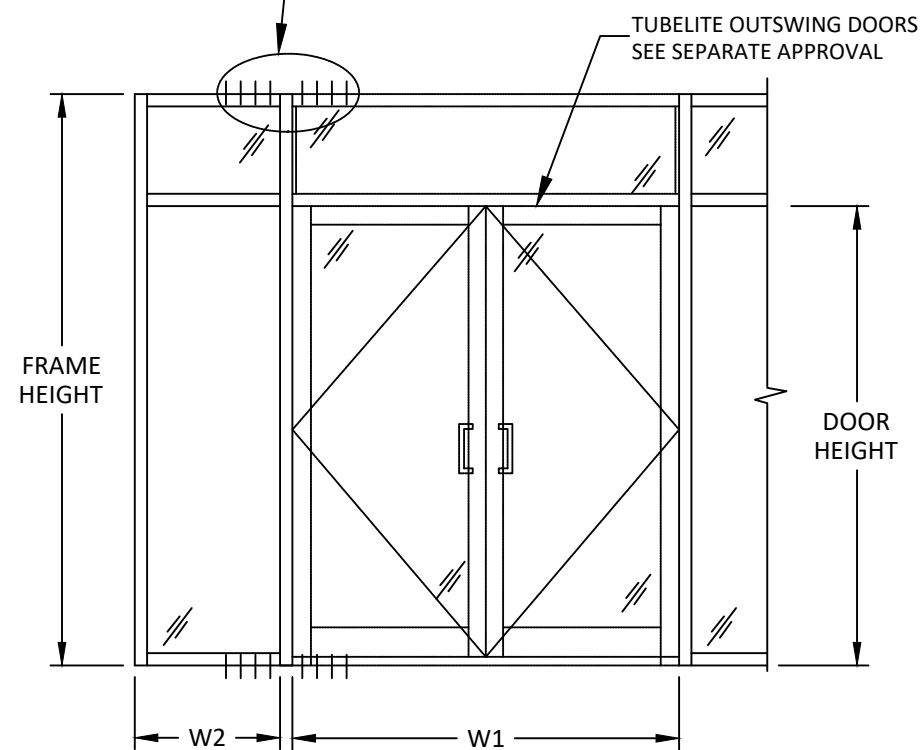
**TUBELITE**  
**DEPENDABLE**  
 LEADERS IN ECO-EFFICIENT STOREFRONT,  
 CURTAINWALL AND ENTRANCE SYSTEMS

3056 WALKER RIDGE DRIVE N.W.  
 WALKER, MICHIGAN 49544  
 PH: 800 866 2227 FX: 616 301 0008

DOUBLE DOOR MULLION WITH TRANSOM LOAD CAPACITY			
NOMINAL DIMS. (IN)			LOADS - PSF
FRAME HEIGHT	DOOR LEAF WIDTH (W1)	SIDELITE WIDTH (W2)	EXT. (+) INT. (-)
			WITH DETAILS D/9 & G/9
126	66	27	44.2
		33	41.6
		39	39.2
		45	37.1
		46	36.7
	70	27	42.4
		33	39.9
		39	37.7
		45	35.8
		46	35.5
	74	27	40.7
		33	38.5
		39	36.4
		45	34.6
		46	34.3
132	66	27	42.2
		33	39.7
		39	37.4
		45	35.4
		46	35.1
	70	27	40.5
		33	38.1
		39	36.0
		45	34.2
		46	33.9
	74	27	38.9
		33	36.7
		39	34.8
		45	33.0
		46	32.7

DOUBLE DOOR MULLION WITH TRANSOM LOAD CAPACITY			
NOMINAL DIMS. (IN)			LOADS - PSF
FRAME HEIGHT	DOOR LEAF WIDTH (W1)	SIDELITE WIDTH (W2)	EXT. (+) INT. (-)
			WITH DETAILS D/9 & G/9
138	66	27	40.4
		33	37.9
		39	35.8
		45	33.8
		46	33.5
	70	27	38.7
		33	36.5
		39	34.5
		45	32.7
		46	32.4
	74	27	37.2
		33	35.1
		39	33.2
		45	31.6
		46	31.3
144	66	27	38.7
		33	36.4
		39	34.3
		45	32.4
		46	32.1
	70	27	37.1
		33	35.0
		39	33.0
		45	31.3
		46	31.0
	74	27	35.6
		33	33.6
		39	31.9
		45	30.3
		46	30.0

ANCHOR TYPES	TOTAL NO. OF ANCHORS AT DOOR MULLION HEAD AND SILL (EA. SIDE)
A	4
B	6
C	5
D	6
E	5
F	4
G	4
H	3
I	3
J	3
K	6
L	3



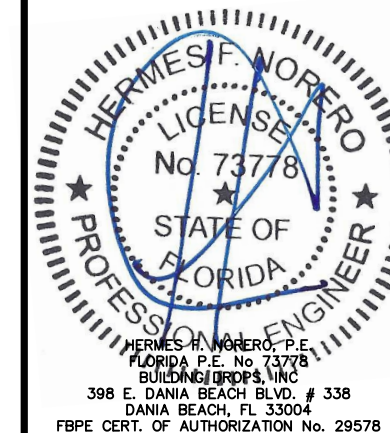
**DOUBLE DOOR WITH TRANSOM**

TITLE: E/T/U/SERIES 24650  
 STOREFRONT SYSTEM  
 (NON-HVHZ)/(NON-IMPACT)  
 DOOR MULLION DESIGN  
 PRESSURE TABLES

PREPARED BY:  
**BUILDING DROPS, INC.**  
 398 E. DANIA BEACH BLVD., STE. 338  
 DANIA BEACH, FL 33004  
 PH: (954) 959-8478  
 FAX: (954) 744-4738  
 WEB: www.buildingdrops.com

REMARKS	BY	DATE

THE INSTALLATION DETAILS DESCRIBED HEREIN ARE GENERIC AND MAY NOT REFLECT ACTUAL CONDITIONS FOR A SPECIFIC SITE. IF SITE CONDITIONS CAUSE INSTALLATION TO DEVIATE FROM THE REQUIREMENTS DETAILED HEREIN, A LICENSED ENGINEER OR ARCHITECT SHALL PREPARE SITE SPECIFIC DOCUMENTS FOR USE WITH THIS DOCUMENT



FL #:	<b>FL20393</b>
DATE:	<b>10.28.20</b>
DWG. BY:	<b>ER</b>
CHK. BY:	<b>HFN</b>
SCALE:	<b>NTS</b>
DWG. #:	<b>TLI009</b>
SECTION	<b>10</b>

# DOOR MULLION DESIGN PRESSURE TABLES (CONT.)

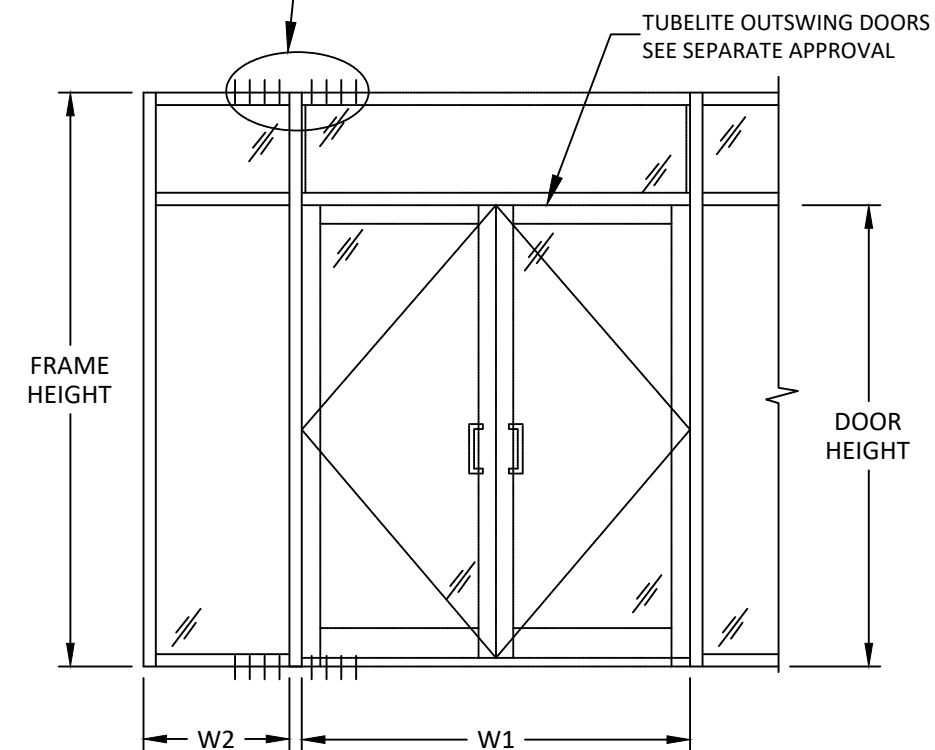
**TUBELITE**  
**DEPENDABLE**  
 LEADERS IN ECO-EFFICIENT STOREFRONT,  
 CURTAINWALL AND ENTRANCE SYSTEMS

3056 WALKER RIDGE DRIVE N.W.  
 WALKER, MICHIGAN 49544  
 PH: 800 866 2227 FX: 616 301 0008

DOUBLE DOOR MULLION WITH TRANSOM LOAD CAPACITY			
NOMINAL DIMS. (IN)			LOADS - PSF
FRAME HEIGHT	DOOR LEAF WIDTH (W1)	SIDELITE WIDTH (W2)	EXT. (+) INT. (-)
			WITH DETAIL H/9
150	66	27	44.1
		33	41.4
		39	39.0
		45	36.9
		48	36.0
	70	27	42.3
		33	39.8
		39	37.6
		45	35.6
		48	34.7
	74	27	40.6
		33	38.3
39		36.3	
45		34.4	
48		33.6	
156	66	27	42.4
		33	39.8
		39	37.5
		45	35.5
		48	34.6
	70	27	40.6
		33	38.3
		39	36.2
		45	34.3
		48	33.4
	74	27	39.0
		33	36.8
39		34.9	
45		33.1	
48		32.3	

DOUBLE DOOR MULLION WITH TRANSOM LOAD CAPACITY			
NOMINAL DIMS. (IN)			LOADS - PSF
FRAME HEIGHT	DOOR LEAF WIDTH (W1)	SIDELITE WIDTH (W2)	EXT. (+) INT. (-)
			WITH DETAIL H/9
162	66	27	40.8
		33	38.3
		39	36.1
		45	34.2
		48	33.3
	70	27	39.1
		33	36.9
		39	34.8
		45	33.0
		48	32.2
	74	27	37.6
		33	35.5
39		33.6	
45		31.9	
48		31.1	
168	66	27	39.4
		33	37.0
		39	34.9
		45	33.0
		48	32.1
	70	27	37.7
		33	35.5
		39	33.6
		45	31.8
		48	31.0
	74	27	36.2
		33	34.2
39		32.4	
45		30.8	
48		30.0	

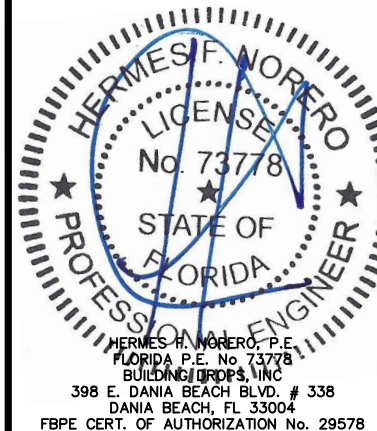
ANCHOR TYPES	TOTAL NO. OF ANCHORS AT DOOR MULLION HEAD AND SILL (EA. SIDE)
A	5
B	7
C	5
D	7
E	5
F	5
G	5
H	4
I	4
J	4
K	7
L	3



**DOUBLE DOOR WITH TRANSOM**

REMARKS	BY	DATE

THE INSTALLATION DETAILS DESCRIBED HEREIN ARE GENERIC AND MAY NOT REFLECT ACTUAL CONDITIONS FOR A SPECIFIC SITE. IF SITE CONDITIONS CAUSE INSTALLATION TO DEVIATE FROM THE REQUIREMENTS DETAILED HEREIN, A LICENSED ENGINEER OR ARCHITECT SHALL PREPARE SITE SPECIFIC DOCUMENTS FOR USE WITH THIS DOCUMENT



FL #:  
**FL20393**

DATE: **10.28.20**

DWG. BY: **ER**      CHK. BY: **HFN**

SCALE: **NTS**

DWG. #: **TLI009**

SECTION  
**11**

OF 13

TITLE: **E/T/U/SERIES 24650**  
**STOREFRONT SYSTEM**  
**(NON-HVHZ)/(NON-IMPACT)**  
 DOOR MULLION DESIGN  
 PRESSURE TABLES (CONT.)

PREPARED BY:  
**BUILDING DROPS, INC.**  
 398 E. DANIA BEACH BLVD., STE. 338  
 DANIA BEACH, FL 33004  
 PH: (954) 959-8478  
 FAX: (954) 744-4738  
 WEB: www.buildingdrops.com

c:\users\p50\onedrive - building drops, inc.\tl009 2020-12-21.dwg

# DOOR MULLION DESIGN PRESSURE TABLES (CONT.)

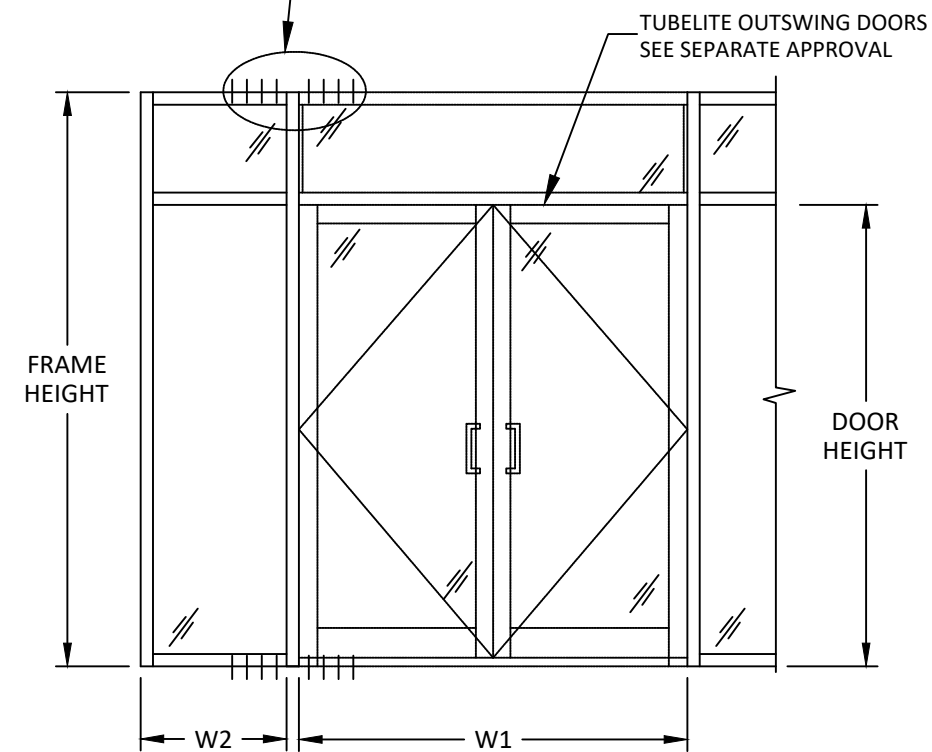
**TUBELITE**  
**DEPENDABLE**  
 LEADERS IN ECO-EFFICIENT STOREFRONT,  
 CURTAINWALL AND ENTRANCE SYSTEMS

3056 WALKER RIDGE DRIVE N.W.  
 WALKER, MICHIGAN 49544  
 PH: 800 866 2227 FX: 616 301 0008

DOUBLE DOOR MULLION WITH TRANSOM LOAD CAPACITY				
NOMINAL DIMS. (IN)			LOADS - PSF	
FRAME HEIGHT	DOOR LEAF WIDTH (W1)	SIDELITE WIDTH (W2)	EXT. (+) INT. (-)	
			WITH DETAILS F/9 & E/9	
114	88	20	45.0	
		32	45.0	
		44	41.1	
		56	37.7	
		62	36.2	
	92	20	45.0	
		32	43.8	
		44	39.9	
		56	36.7	
		62	35.2	
96	20	45.0		
	32	42.4		
	44	38.8		
	56	35.7		
	62	34.3		
	120	88	20	45.0
			32	43.0
44			39.1	
56			35.8	
62			34.4	
120	92	20	45.0	
		32	41.6	
		44	37.9	
		56	34.8	
		62	33.5	
	96	20	44.4	
		32	40.3	
		44	36.8	
		56	33.9	
		62	32.6	

DOUBLE DOOR MULLION WITH TRANSOM LOAD CAPACITY				
NOMINAL DIMS. (IN)			LOADS - PSF	
FRAME HEIGHT	DOOR LEAF WIDTH (W1)	SIDELITE WIDTH (W2)	EXT. (+) INT. (-)	
			WITH DETAILS F/9 & E/9	
126	88	20	45.0	
		32	40.9	
		44	37.2	
		56	34.1	
		62	32.7	
	92	20	43.8	
		32	39.6	
		44	36.1	
		56	33.2	
		62	31.9	
96	20	42.3		
	32	38.4		
	44	35.1		
	56	32.3		
	62	31.1		
	130.5	88	20	43.9
			32	39.5
44			35.9	
56			32.9	
62			31.6	
130.5	92	20	42.3	
		32	38.2	
		44	34.9	
		56	32.0	
		62	30.8	
	96	20	40.9	
		32	37.0	
		44	33.9	
		56	31.2	
		62	30.0	

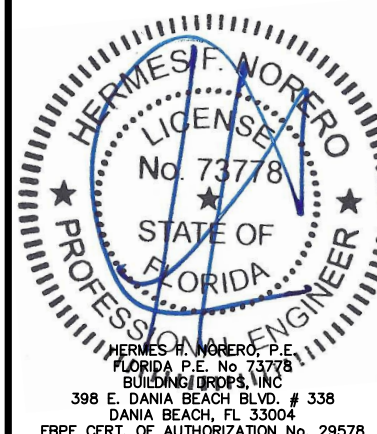
ANCHOR TYPES	TOTAL NO. OF ANCHORS AT DOOR MULLION HEAD AND SILL (EA. SIDE)
A	5
B	7
C	5
D	7
E	5
F	5
G	5
H	4
I	4
J	4
K	7
L	3



**DOUBLE DOOR WITH TRANSOM**

REMARKS	BY	DATE

THE INSTALLATION DETAILS DESCRIBED HEREIN ARE GENERIC AND MAY NOT REFLECT ACTUAL CONDITIONS FOR A SPECIFIC SITE. IF SITE CONDITIONS CAUSE INSTALLATION TO DEVIATE FROM THE REQUIREMENTS DETAILED HEREIN, A LICENSED ENGINEER OR ARCHITECT SHALL PREPARE SITE SPECIFIC DOCUMENTS FOR USE WITH THIS DOCUMENT



FL #:	<b>FL20393</b>
DATE:	<b>10.28.20</b>
DWG. BY:	<b>ER</b>
CHK. BY:	<b>HFN</b>
SCALE:	<b>NTS</b>
DWG. #:	<b>TLI009</b>

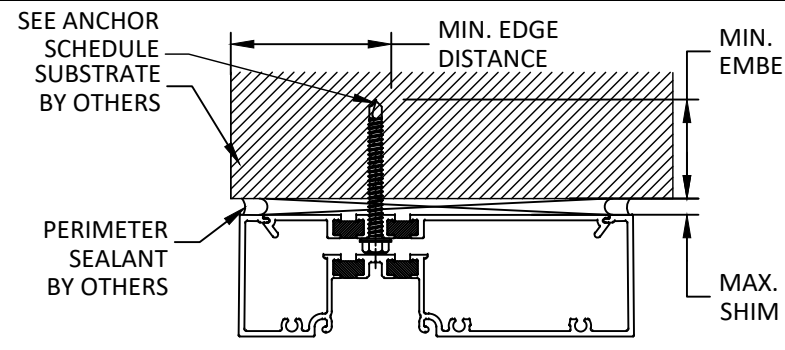
SECTION  
**12**  
 OF 13

TITLE: **E/T/U/SERIES 24650 STOREFRONT SYSTEM (NON-HVHZ)(NON-IMPACT) DOOR MULLION DESIGN PRESSURE TABLES (CONT.)**

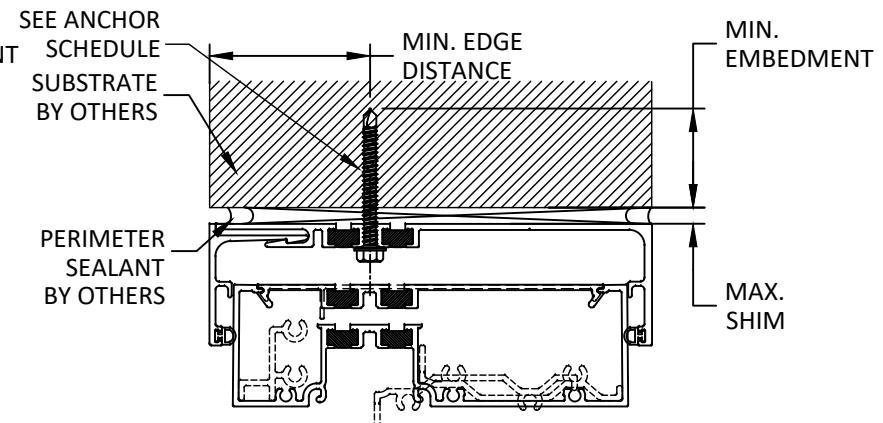
PREPARED BY: **BUILDING DROPS, INC.**  
 398 E. DANIA BEACH BLVD., STE. 338  
 DANIA BEACH, FL 33004  
 PH: (954) 959-8478  
 FAX: (954) 744-4738  
 WEB: www.buildingdrops.com

c:\users\p50\onedrive - building drops, inc.\tl009 2020-12-21.dwg 12/21/2020 11:26 AM

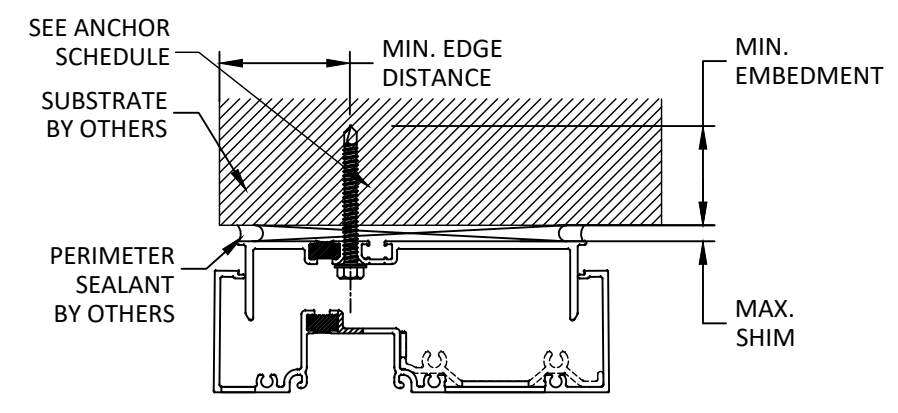
12/21/2020 11:26 AM



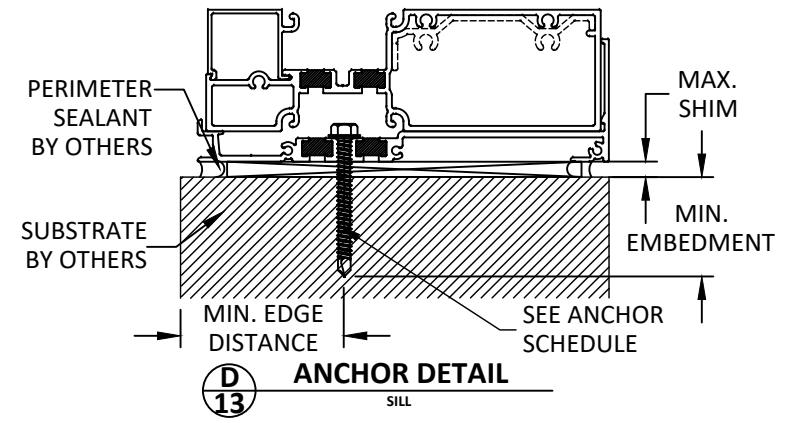
**A**  
13  
ANCHOR DETAIL  
HEAD



**B**  
13  
ANCHOR DETAIL  
HEAD



**C**  
13  
ANCHOR DETAIL  
HEAD



**D**  
13  
ANCHOR DETAIL  
SILL

**INSTALLATION NOTES:**

- \*FOR STEEL AND ALUMINUM, ANCHOR SHALL BE OF SUFFICIENT LENGTH TO ACHIEVE 3 THREADS OF PENETRATION BEYOND THE WALL OF THE METAL.
- ONE (1) INSTALLATION ANCHOR IS REQUIRED AT EACH ANCHOR LOCATION SHOWN.
- THE NUMBER OF INSTALLATION ANCHORS DEPICTED IS THE MINIMUM NUMBER OF ANCHORS TO BE USED FOR PRODUCT INSTALLATION.
- INSTALL INDIVIDUAL INSTALLATION ANCHORS WITHIN A TOLERANCE OF ±1/2 INCH OF THE DEPICTED LOCATION IN THE ANCHOR LAYOUT DETAIL (I.E., WITHOUT CONSIDERATION OF TOLERANCES). TOLERANCES ARE NOT CUMULATIVE FROM ONE INSTALLATION ANCHOR TO THE NEXT.
- SHIM AS REQUIRED AT EACH INSTALLATION ANCHOR WITH LOAD BEARING SHIM(S). MAXIMUM ALLOWABLE SHIM STACK TO BE 1/2 INCH. SHIM WHERE SPACE OF 1/16 INCH OR GREATER OCCURS. SHIM(S) SHALL BE CONSTRUCTED OF HIGH DENSITY PLASTIC OR BETTER.
- MINIMUM EMBEDMENT AND EDGE DISTANCE EXCLUDE WALL FINISHES, INCLUDING BUT NOT LIMITED TO STUCCO, FOAM, BRICK VENEER, AND SIDING.
- INSTALLATION ANCHORS AND ASSOCIATED HARDWARE MUST BE MADE OF CORROSION RESISTANT MATERIAL OR HAVE A CORROSION RESISTANT COATING.
- INSTALLATION ANCHORS SHALL BE INSTALLED IN ACCORDANCE WITH ANCHOR MANUFACTURER'S INSTALLATION INSTRUCTIONS, AND ANCHORS SHALL NOT BE USED IN SUBSTRATES WITH STRENGTHS LESS THAN THE MINIMUM STRENGTH SPECIFIED BY THE ANCHOR MANUFACTURER.

ANCHOR SCHEDULE					
TYPE	ANCHOR	SUBSTRATE	MIN. EMBEDMENT	MIN. EDGE DISTANCE	MAX. SHIM SIZE
A	1/4" ELCO ULTRACON (CARBON STEEL)	3000 PSI CONCRETE MIN. OR GROUT FILLED CMU PER ASTM C-90 W/ MIN. F'C=2000 PSI	1.75"	2.5"	0.50"
B	1/4" ITW TAPCON (CARBON OR STAINLESS STEEL)		1.75"	2.5"	0.50"
C	1/4" HILTI KWIK-CON II+ (CARBON OR STAINLESS STEEL)		1"	2.5"	0.50"
D	#14 WOOD SCREW	2X WOOD MIN. S.G.=0.55	1.5"	1"	0.50"
E	1/4" GR. 5 SELF-TAPPING/DRILLING SCREW	MIN. 18 GA STEEL STUD (0.0478") 33 KSI OR MIN. 0.090" 6063-T5 ALUMINUM	3 THREADS*	1"	0.50"
F	3/8" POWERS TAPPER (CARBON STEEL)	3000 PSI CONCRETE MIN.	1.25"	2.5"	0.50"
G	3/8" POWERS TAPPER (CARBON STEEL)	GROUT FILLED CMU PER ASTM C-90. MIN. F'C=2000 PSI	1.75"	3"	0.50"
H	3/8" ITW LDT (CARBON STEEL)	3000 PSI CONCRETE MIN.	1.5"	2.5"	0.50"
I	3/8" ITW LDT (CARBON STEEL)	GROUT FILLED CMU PER ASTM C-90. MIN. F'C=2000 PSI	1.5"	3"	0.50"
J	3/8" ITW TRUBOLT WEDGE (CARBON STEEL OR SS)	2000 PSI CONCRETE MIN.	1.5"	2.5"	0.50"
K	3/8" LAG SCREW	2X WOOD MIN. S.G.=0.55	1.5"	1.5"	0.50"
L	5/16" GR. 5 SELF-TAPPING/DRILLING SCREW	MIN. 18 GA STEEL STUD (0.0478") 33 KSI OR MIN. 0.090" 6063-T5 ALUMINUM	3 THREADS*	1"	0.50"

**TUBELITE**  
DEPENDABLE  
LEADERS IN ECO-EFFICIENT STOREFRONT, CURTAINWALL AND ENTRANCE SYSTEMS

3056 WALKER RIDGE DRIVE N.W.  
WALKER, MICHIGAN 49544  
PH: 800 866 2227 FX: 616 301 0008

TITLE: E/IT/U/SERIES 24650  
STOREFRONT SYSTEM  
(NON-HVHZ)/(NON-IMPACT)  
ANCHOR DETAILS, SCHEDULE  
& INSTALLATION NOTES

PREPARED BY:  
**BUILDING DROPS, INC.**  
398 E. DANIA BEACH BLVD., STE. 338  
DANIA BEACH, FL 33004  
PH: (954) 999-8478  
FAX: (954) 744-4738  
WEB: www.buildingdrops.com

REMARKS	BY	DATE

THE INSTALLATION DETAILS DESCRIBED HEREIN ARE GENERIC AND MAY NOT REFLECT ACTUAL CONDITIONS FOR A SPECIFIC SITE. IF SITE CONDITIONS CAUSE INSTALLATION TO DEVIATE FROM THE REQUIREMENTS DETAILED HEREIN, A LICENSED ENGINEER OR ARCHITECT SHALL PREPARE SITE SPECIFIC DOCUMENTS FOR USE WITH THIS DOCUMENT

HERMES H. MORERO, P.E.  
FLORIDA P.E. No. 73778  
BUILDING DROPS, INC.  
398 E. DANIA BEACH BLVD. # 338  
DANIA BEACH, FL 33004  
FBPE CERT. OF AUTHORIZATION No. 29578

FL #:  
**FL20393**

DATE: **10.28.20**

DWG. BY: **ER**      CHK. BY: **HFN**

SCALE: **NTS**

DWG. #: **TLI009**

SECTION  
**13**

OF 13

c:\users\p50\onedrive - building drops, inc.\tl1009 2020-12-21.dwg